

Heating & Air Conditioning
Amana[®]

Residential Products Catalog
05.23



Amana is a registered trademark of Maytag Corporation or its related companies and is used under license. All rights reserved.

Premium Amana[®] Brand Quality

Amana brand heating and cooling systems are a part of the tried and true legacy of one of America's most recognized and respected brands.



Split Systems 5

Air Conditioners

ASXV9	Up to 22.5 SEER2	6
ASXC7	Up to 17.2 SEER2	7
ASXS6	Up to 17.2 SEER2	8
ASXH5	Up to 15.2 SEER2	9
ASXH4	14.3 SEER2	10
ASXN4	14.3 SEER2	11
ASXH3	13.4 SEER2	12
ASXN3	13.4 SEER2	13

Heat Pumps

ASZV9	Up to 22.5 SEER2 & 8.2 HSPF2	14
ASZC7	Up to 17.2 SEER2 & 8.2 HSPF2	15
ASZS6	Up to 17.5 SEER2 & 8.5 HSPF2	16
ASZH5	Up to 15.2 SEER2 & 7.8 HSPF2	17
ASZH4	14.3 SEER2 & 7.5 HSP2	18
ASZN4	14.3 SEER2 & 7.5 HSP2	19

Gas Furnaces 20

90+% AFUE Gas Furnaces

AMVM97 (B)	Up to 97% AFUE	21
ACVM97 (B)	Up to 97% AFUE	22
AMVC96 (B)	Up to 96% AFUE	23
ACVC96 (B)	Up to 96% AFUE	24
AM9S96/AC9S96	Up to 96% AFUE	25
AM9C96	Up to 96% AFUE	26
AC9C96	Up to 96% AFUE	27
AM9S96-U	Up to 96% AFUE	28
AMVS96-U	Up to 96% AFUE	29
AM9S92	Up to 92% AFUE	30

80% AFUE Gas Furnaces

AMVC80/ACVC80	80% AFUE	31
AM9S80/AC9S80	80% AFUE	32
AM9S80-U	80% AFUE	33
AMVS80-U	80% AFUE	34
AM9C80/AC9C80	80% AFUE	35

Air Handlers & Evaporator Coils 36

Air Handlers

AHVE	Multi-Position, Variable-Speed	37
AMVE	Multi-Position, Variable-Speed	38
AMVT	Multi-Position, Variable-Speed	39
AMST	Multi-Position, Multi-Speed ECM	40
MBVC	Multi-Position Modular Blowers	41
AWST	Wall Mount	42
AWSF	Wall Mount	43
ACSF	Ceiling-Mounted	44

Evaporator Coils

CAPEA / CAPE & CHPE Cased Indoor Coil	45
CAPTA Cased Indoor "A" Coil	46
CAPT Cased Indoor "A" Coil, Internal TXVs	47
CAPF Cased Indoor "A" Coil, Upflow/Downflow	48
CAPFA Cased Indoor "A" Coil, Upflow/Downflow	49
CAUF Uncased Indoor "A" Coil	50
CAUFA Uncased Indoor "A" Coil	51
CHPF Cased Indoor "A" Coil, Horizontal	52
CHPT Cased Indoor "A" Coil, Horizontal	53
CHPTA Cased Indoor "A" Coil, Horizontal	54
CSCF Cased Indoor Slab, Horizontal	55

Packaged Units 56

Air Conditioners

APCH3	13.4 SEER2	57
-------	------------	----

Heat Pumps

APHH5	Up to 15.2 SEER2 / Up to 6.7 HSPF2	58
APHM5	Up to 15.2 SEER2 / Up to 6.7 HSPF2	59
APHH3	13.4 SEER2 / 6.7 HSPF2	60
APHM3	13.4 SEER2 / 6.7 HSPF2	61

Gas-Electric

APGM5	Up to 15.2 SEER2 / 81% AFUE	62
APGM3	13.4 SEER2 / 81% AFUE	63
APUM3	13.4 SEER2 / 81% AFUE	64

Dual Fuel

APDM3	13.4 SEER2 / 81% AFUE / 6.7 HSPF2	65
-------	-----------------------------------	----

Controls & Thermostats 66

Touchscreen Thermostats: Amana® Brand Smart Thermostat AT4272, AT4273	67
ProStat Thermostats: PRS3110, PRS3210, PRS4110, PRS4210, PRS6110, PRS6320, PRS6420, PRS7325WF, PRS6390/PRS6490	69

Our continuing commitment to quality products may mean a change in specifications without notice. ©2023 Goodman Manufacturing Company, L.P.

Amana is a registered trademark of Maytag Corporation or its related companies and is used under license. All rights reserved.

REGIONAL EFFICIENCY STANDARDS

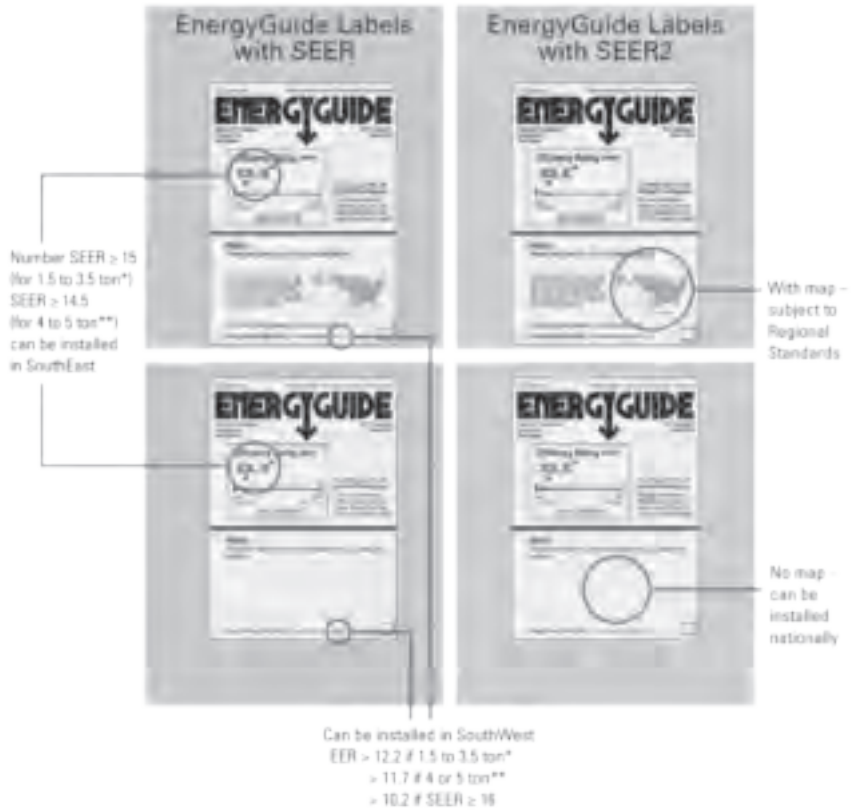
Labeling

There are two methods to help identify products subject to regional standards. The first is the EnergyGuide label that is noticeably different, with the inclusion of the map of the United States that identifies where the equipment can be installed.

The second is a separate statement that will be on the rating plate or on a label next to the rating plate called the “Install Prohibited” statement. All products subject to regional standards have both the EnergyGuide label and the Install Prohibited statement.

NOTE: The Federal Trade Commission (FTC) originally required a range of SEER be placed on Split System products subject to regional efficiency standards. However, they reversed their decision and now only a single value is listed (since mid-2017). Products in inventory may have mixed EnergyGuide labels (some having a range, others having a single value for SEER). FTC does not require re-labeling of existing product.

EnergyGuide Labels Currently In Effect



The newest U.S. Department of Energy (DOE) minimum efficiency changes go into effect on January 1, 2023, affecting all residential air conditioners and heat pumps we manufacture. The changes maintain regional standards that apply to Split System and Package Air Conditioners, with all metrics now based on the new metrics (SEER2/EER2/HSPF2). The DOE minimum efficiency standards include both national standards (which are based on date of manufacture) and regional standards (which are based on date of installation).

National Standards

- » Split system heat pumps (14.3 SEER2 / 7.5 HSPF2)
- » Single package heat pumps (13.4 SEER2 / 6.7 HSPF2)
- » Single package air conditioner (13.4 SEER2)
- » Single package gas/electric (13.4 SEER2 / 81% AFUE)

Regional Efficiency Standards

Only air conditioners (both split system and single package) are subject to regional efficiency standards. The map to the right summarizes the national and regional efficiency standards.



What You Need to Know as a Distributor

DOE defines a distributor as “a person (other than a manufacturer or retailer) to whom a consumer product is delivered or sold for purposes of distribution in commerce.” Therefore, if you resell product for sale other than to an end user, you may be considered a distributor as opposed to a contractor or dealer (see definitions below).

Distributors are required to comply with the requirements:

1. Do not knowingly sell product that will be installed in violation of regional standards.
2. Conduct regional standards training for all employees and customers.
3. Maintain records for all units subject to the regional standards for a period of 54 months. These records are to include the outdoor unit manufacturer, model number, serial number, date of purchase, date of sale, customer name and delivery address if delivered.

What You Need to Know as a Contractor/Dealer

As a contractor or dealer, you will also be required to adhere to requirements of the DOE HVAC Regional Standards Enforcement Rules. DOE has defined a contractor as “a person (other than the manufacturer or distributor) who sells to and/or installs for an end user a central air conditioner subject to regional standards.” DOE has defined a dealer as “a type of contractor, generally with a relationship with one or more specified manufacturers.”

The contractor/dealer requirements include the following:

1. Do not knowingly install product that is in violation of regional standards.
2. Conduct regional standards training for all employees.
3. Maintain records for all units subject to the regional standards for a period of 48 months. These records to include the indoor and outdoor unit manufacturer and model number, outdoor unit serial number, distributor purchased from, date and address of installation.

Also important is that DOE defines “installation of a central air conditioner” as “the connection of the refrigerant lines and/or electrical systems to make the central air conditioner operational.”

Enforcement

Enforcement of the standards will be at least partially via complaints registered with the DOE. DOE has set up an email for reporting suspected violations directly to them at EnergyEfficiencyEnforcement@doe.gov, or suspected violations can be reported by phone, at (202) 287-6997.

All verified violations will require remediation and can result in stiff fines. Notices of Violation will be posted publicly by the DOE. Further, if a distributor or contractor/dealer is found to routinely violate the standards, manufacturers can be prohibited from selling products to that party.

Contractors, dealers and distributors should be aware that the DOE may request copies of documentation proving product sales and installations are in compliance. Records requested by DOE must be provided within 30 days.

Questions

Questions about the efficiency standards can be emailed to RegionalStandardsQuestions@daikincomfort.com.

IMPORTANT NOTE:

The information provided is a summarized overview and is not intended to provide a complete description of the DOE Regional Standards. For more information regarding the DOE Regional Standards and the enforcement of these standards, please visit: www.energy.gov/gc/legal-resources/office-assistant-general-counsel-enforcement/regional-standards-enforcement



SPLIT SYSTEMS



SPLIT SYSTEM AIR CONDITIONERS

ASXV9 / Variable-Speed / Inverter-Driven / Up to 22.5 SEER2

Model	Nominal Capacity (Tons)	Voltage-Phase	Dimensions			Service Valve		dBs ¹	Ship Weight (lbs)	Energy Star® 2023
			W"	D"	H"	Liquid"	Suction"			
ASXV902410A*	2	208-230/1	35½	35½	38¼	¾"	¾"	71	241	Most Efficient ²
ASXV903610A*	3	208-230/1	35½	35½	38¼	¾"	7/8"	74	253	Energy Star ¹
ASXV904810A*	4	208-230/1	35½	35½	41¾	¾"	7/8"	75	353	Most Efficient ²
ASXV906010A*	5	208-230/1	35½	35½	41¾	¾"	7/8"	75	353	Most Efficient ²

¹ Minimum/Intermediate/Maximum sound levels

² Products that are recognized as the Most Efficient of ENERGY STAR® in 2023 prevent greenhouse gas emissions by meeting rigorous energy efficiency performance levels set by the U.S. Environmental Protection Agency. Select combinations are recognized as the Most Efficient of ENERGY STAR® in 2023. Visit the following website for more information: www.energystar.gov/products/most_efficient.

¹ Proper sizing and installation of equipment is critical to achieve optimal performance. Split system air conditioners and heat pumps must be matched with appropriate coil components to meet ENERGY STAR criteria. Ask your contractor for details or visit www.energystar.gov. Products that are recognized as the Most Efficient of ENERGY STAR® in 2023 prevent greenhouse gas emissions by meeting rigorous energy efficiency performance levels set by the U.S. Environmental Protection Agency.

Daikin Comfort Technologies Manufacturing, L.P. reserves the right to discontinue, or change at any time, specifications or designs without notice or without incurring obligations.

Limited Warranty*

* Complete warranty details available from your local dealer or at www.amana-hac.com. To receive the Lifetime Unit Replacement Limited Warranty (good for as long as you own your home) and 10-Year Parts Limited Warranty, online registration must be completed within 60 days of installation. Online registration is not required in California or Quebec. The duration of warranty coverages in Texas differs in some cases.



The Amana® brand ASXV9 Air Conditioner features energy efficiencies and operating sound levels that are among the best in the residential ducted heating and cooling industry. The ASXV9 contains a variable speed, high-efficiency compressor. This unit is designed for the consumer who desires superb comfort and quiet operation.



Standard Features

- Variable-speed swing and scroll compressors
- High-density compressor sound blanket
- Integrated communicating ComfortBridge™ Technology
- Commissioning and diagnostics via indoor board Bluetooth with the CoolCloud™ phone and tablet application
- Variable-speed DC outdoor fan motor
- Control algorithmic logic
- In communicating mode, only two low-voltage wires to outdoor unit required
- Diagnostic indicator lights, seven-segment LED display, and fault code storage
- Field-selectable boost mode increases compressor speed during unusually high loads
- Field-installed bi-flow filter drier
- Coil and ambient temperature sensors
- AHRI Certified; ETL Listed

Cabinet Features

- Heavy-gauge, galvanized-steel cabinet
- Removable grille-style top design compliant with UL 60335-2-40
- Venturi for increased velocity of airflow
- Baked-on powder-paint finish
- 500-hour salt-spray tested
- Wire fan discharge grille
- Steel louver coil guard
- Top and side maintenance access
- Sweat connection service valves with easy access to gauge ports
- Single-panel access to controls with space provided for field-installed accessories
- When properly anchored, meets the 2020 Florida Building Code unit integrity requirements for hurricane-type winds (Anchor bracket kits available.)

ASXC7 / Two-Stage / High-Efficiency / Up to 17.2 SEER2

Model	Nominal Capacity (Tons)	Voltage-Phase	Dimensions			Service Valve		dBs	Ship Weight (lbs)	Energy Star® 2023
			W"	D"	H"	Liquid"	Suction"			
ASXC702410A*	2	208/230-1	35½	35½	39½	¾"	¾"	71	236	Most Efficient ²
ASXC703610A*	3	208/230-1	35½	35½	39½	¾"	7/8"	72	238	Most Efficient ²
ASXC704810A*	4	208/230-1	35½	35½	41½	¾"	7/8"	74	298	Most Efficient ²
ASXC706010A*	5	208/230-1	35½	35½	41½	¾"	7/8"	75	305	Energy Star ¹

¹ Products that are recognized as the Most Efficient of **ENERGY STAR**® in 2023 prevent greenhouse gas emissions by meeting rigorous energy efficiency performance levels set by the U.S. Environmental Protection Agency. Select combinations are recognized as the Most Efficient of **ENERGY STAR**® in 2023. Visit the following website for more information: www.energystar.gov/products/most_efficient.

² Proper sizing and installation of equipment is critical to achieve optimal performance. Split system air conditioners and heat pumps must be matched with appropriate coil components to meet ENERGY STAR criteria. Ask your contractor for details or visit www.energystar.gov. Products that are recognized as the Most Efficient of ENERGY STAR® in 2023 prevent greenhouse gas emissions by meeting rigorous energy efficiency performance levels set by the U.S. Environmental Protection Agency.

Daikin Comfort Technologies Manufacturing, L.P. reserves the right to discontinue, or change at any time, specifications or designs without notice or without incurring obligations.

Limited Warranty*

* Complete warranty details available from your local dealer or at www.amana-hac.com. To receive the Lifetime Unit Replacement Limited Warranty (good for as long as you own your home) and 10-Year Parts Limited Warranty, online registration must be completed within 60 days of installation. Online registration is not required in California or Quebec. The duration of warranty coverages in Texas differs in some cases.



The Amana brand ASXC7 Air Conditioner contains the Two-Stage Copeland Ultra-Tech scroll compressor. This unit is designed for the consumer who desires superb comfort and quiet operation.



Standard Features

- Two-Stage Copeland Ultra-Tech scroll compressor
- Quiet two-speed ECM outdoor fan motor
- Integrated communicating ComfortBridge™ Technology
- Commissioning and diagnostics via Bluetooth indoor board via CoolCloud™ App
- Copeland® ComfortAlert™ built in diagnostics
- Copper tube/ enhanced aluminum fin coil-5mm on 2.0-3.0T
- Color-coded terminal strip for non-communicating set-up
- Only two low-voltage wires required in communication mode
- Factory-installed filter drier
- Factory-installed transformer
- Factory-installed high and low-pressure switches
- High-density foam compressor sound blanket
- Fully charged for 15' of tubing length
- Ambient temperature sensors
- Ground lug connection
- AHRI Certified - ETL Listed

Cabinet Features

- Removable grille-style top design compliant with UL 60335-2-40
- Venturi for increased velocity of airflow
- Heavy-gauge galvanized steel cabinet
- Baked-on powder-paint finish with 500-hour salt-spray approval
- Steel louver coil guard with Rust-resistant screws.
- Top and side maintenance access
- Single-panel access to controls with space for field-installed accessories
- Service valves with sweat connections and easy-access gauge ports
- When properly anchored, meets the 2020 Florida Building Code unit integrity requirements for hurricane-type winds (Anchor bracket kits available.)



SPLIT SYSTEM AIR CONDITIONERS

ASXS6 / Amana S-Series / Inverter-Driven / Up to 17.2 SEER2

	ASXS6 S1810A*	ASXS6 S2410A*	ASXS6 S3010A*	ASXS6 S3610A*	ASXS6 S4210A*	ASXS6 S4810A*	ASXS6 S6010A*	ASXS6 01810A*	ASXS6 02410A*	ASXS6 03010A*	ASXS6 03610A*
CAPACITIES (AHRI RATED)											
Max. Cooling (BTU/h)	16,600	22,200	27,800	33,600	39,500	45,000	53,000	16,600	22,200	27,800	32,400
AMBIENT OPERATION RANGE	0 to 115 (-17.8 to 46.1)										
COOLING (*FDB(°CDB))											
COMPRESSOR											
Type	Swing	Swing	Swing	Swing	Swing	Swing	Swing	Swing	Swing	Swing	Swing
RLA	10.0	13.4	16.8	16.8	25.5	25.5	26.9	10.0	13.4	16.8	16.8
CONDENSER FAN MOTOR											
Horsepower	0.09	0.09	0.20	0.20	0.36	0.36	0.36	0.09	0.09	0.20	0.20
FLA	1.15	1.15	2.00	2.00	1.63	1.63	1.63	1.15	1.15	2.00	2.00
REFRIGERATION SYSTEM											
Refrigerant Line Size ¹											
Liquid Line Size ("O.D.)	3/8"	3/8"	3/8"	3/8"	3/8"	3/8"	3/8"	3/8"	3/8"	3/8"	3/8"
Suction Line Size ("O.D.)	3/4"	3/4"	7/8"	7/8"	1 1/8"	1 1/8"	1 1/8"	3/4"	3/4"	7/8"	7/8"
Refrigerant Connection Size											
Liquid Valve Size ("O.D.)	3/8"	3/8"	3/8"	3/8"	3/8"	3/8"	3/8"	3/8"	3/8"	3/8"	3/8"
Suction Valve Size ("O.D.)	3/4"	3/4"	7/8"	7/8"	7/8"	7/8"	7/8"	3/4"	3/4"	7/8"	7/8"
Valve Connection Type	Front Sealing	Front Sealing	Front Sealing	Front Sealing	Front and Back Sealing	Front and Back Sealing	Front and Back Sealing	Front Sealing	Front Sealing	Front Sealing	Front Sealing
Refrigerant Charge (oz.)	76	76	79	85	111	111	131	76	76	79	85
Expansion Device	EEV	EEV	EEV	EEV	EEV	EEV	EEV	EEV	EEV	EEV	EEV
Superheat at Service Valve	Auto-control	Auto-control	Auto-control	Auto-control	Auto-control	Auto-control	Auto-control	Auto-control	Auto-control	Auto-control	Auto-control
Subcooling at Service Valve	10±1°F	12±1°F	14±1°F	15±1°F	8±1°F	9±1°F	9±1°F	10±1°F	12±1°F	14±1°F	13±1°F
ELECTRICAL DATA											
Voltage / Phase (60 Hz)	208-230/1	208-230/1	208-230/1	208-230/1	208-230/1	208-230/1	208-230/1	208-230/1	208-230/1	208-230/1	208-230/1
Minimum Circuit Ampacity ²	14.6	18.8	23.9	23.9	34.4	34.4	36.2	14.6	18.8	23.9	23.9
Max. Overcurrent Protection ³	15	20	25	25	35	35	40	15	20	25	25
Min / Max Volts	197/253	197/253	197/253	197/253	197/253	197/253	197/253	197/253	197/253	197/253	197/253
Electrical Conduit Size	1/2"	1/2"	1/2"	1/2"	1/2" or 3/4"	1/2" or 3/4"	1/2" or 3/4"	1/2"	1/2"	1/2"	1/2"
EQUIPMENT WEIGHT (LBS)	119	119	129	133	163	163	174	119	119	129	133
SHIP WEIGHT (LBS)	133	133	143	148	183	183	196	133	133	143	148

¹ Tested and rated in accordance with ANSI/AHRI Standard 210/240

² Wire size should be determined in accordance with National Electrical Codes; extensive wire runs will require larger wire sizes

³ Must use time-delay fuses or HACR-type circuit breakers of the same size as noted.

NOTES

- Always check the S&R plate for electrical data on the unit being installed.
- Installer will need to supply 7/8" to 1 1/8" adapters for suction line connections.
- Unit is charged with refrigerant for 15' of 3/8" liquid line. System charge must be adjusted per Installation Instructions Final Charge Procedure. (See table below for allowable line set diameter)

Limited Warranty*

* Complete warranty details available from your local dealer or at www.amana-hac.com. To receive the Lifetime Unit Replacement Limited Warranty (good for as long as you own your home) and 10-Year Parts Limited Warranty, online registration must be completed within 60 days of installation. Online registration is not required in California or Quebec. The duration of warranty coverages in Texas differs in some cases.



The Amana® brand ASXS6 Air Conditioner features energy efficiencies and operating sound levels that are among the best in the residential ducted heating and cooling industry. The ASXS6 contains a variable speed, high-efficiency compressor. This unit is designed for the consumer who desires superb comfort and quiet operation.

**20
23
SEER2**

ASXH5 / High-Efficiency / Up to 15.2 SEER2

Model	Nominal Capacity (Tons)	Voltage-Phase	Dimensions			Service Valve		dBs	Ship Weight (lbs)	ENERGY STAR® Certified ¹
			W"	D"	H"	Liquid"	Suction"			
ASXH501810A*	1.5	208/230-1	26	26	27	3/8"	3/4"	71	144	YES
ASXH502410A*	2	208/230-1	29	29	32	3/8"	3/4"	72	169	YES
ASXH503010A*	2.5	208/230-1	35½	35½	39½	3/8"	7/8"	71	224	YES
ASXH503610A*	3	208/230-1	35½	35½	39½	3/8"	7/8"	74	224	YES
ASXH504210A*	3.5	208/230-1	35½	35½	36½	3/8"	7/8"	71	282	YES
ASXH504810A*	4	208/230-1	35½	35½	36½	3/8"	7/8"	72	282	YES
ASXH506010A*	5	208/230-1	35½	35½	41½	3/8"	7/8"	75	305	YES

¹ Proper sizing and installation of equipment is critical to achieve optimal performance. Split system air conditioners and heat pumps must be matched with appropriate coil components to meet ENERGY STAR® criteria. Ask your contractor for details or visit www.energystar.gov. Refer to Specification Sheet for specific ENERGY STAR® certified combinations.

Daikin Comfort Technologies Manufacturing, L.P. reserves the right to discontinue, or change at any time, specifications or designs without notice or without incurring obligations.

Limited Warranty*

* Complete warranty details available from your local dealer or at www.amana-hac.com. To receive the Lifetime Unit Replacement Limited Warranty (good for as long as you own your home) and 10-Year Parts Limited Warranty, online registration must be completed within 60 days of installation. Online registration is not required in California or Quebec. The duration of warranty coverages in Texas differs in some cases.



The Amana brand ASXH5 Air Conditioner contains a High-efficiency Copeland scroll compressor, which provides great temperature and humidity control for the consumer who desires superb comfort and quiet operation.



**20
23
SEER2**

Standard Features

- High-efficiency Copeland scroll compressor
- Advanced Copeland CoreSense technology
- High-density foam compressor sound blanket
- Factory-installed filter drier
- High and low pressure switches
- Copper tube/enhanced aluminum fin coil
- Fully charged for 15' of tubing length
- Service valves with sweat connections and easy access to gauge ports
- Contactor with lug connection
- Ground lug connection
- AHRI Certified; ETL Listed

Cabinet Features

- Removable grille-style top design compliant with UL 60335-2-40
- Venturi for increased velocity of airflow
- Heavy-gauge galvanized-steel cabinet
- Baked-on powder-paint finish with 500-hour salt-spray approval
- Steel louver coil guard with Rust-resistant screws
- Top and side maintenance access
- Single-panel access to controls with space provided for field-installed accessories
- When properly anchored it meets the 2020 Florida Building Code unit integrity requirements for hurricane-type winds (Anchor bracket kits available.)

SPLIT SYSTEM AIR CONDITIONERS

ASXH4 / Energy-Efficient / 14.3 SEER2

Model	Nominal Capacity (Tons)	Voltage-Phase	Dimensions			Service Valve		dBs	Ship Weight (lbs)
			W"	D"	H"	Liquid"	Suction"		
ASXH401810A*	1.5	208/230-1	26	26	27	3/8"	3/4"	71	144
ASXH402410A*	2	208/230-1	29	29	32	3/8"	3/4"	73	169
ASXH403010A*	2.5	208/230-1	35½	35½	39½	3/8"	7/8"	72	224
ASXH403610A*	3	208/230-1	35½	35½	39½	3/8"	7/8"	75	224
ASXH404210A*	3.5	208/230-1	35½	35½	36½	3/8"	7/8"	72	282
ASXH404810A*	4	208/230-1	35½	35½	36½	3/8"	7/8"	73	282
ASXH406010A*	5	208/230-1	35½	35½	41½	3/8"	7/8"	76	305

Daikin Comfort Technologies Manufacturing, L.P. reserves the right to discontinue, or change at any time, specifications or designs without notice or without incurring obligations..

Limited Warranty*

* Complete warranty details available from your local dealer or at www.amana-hac.com. To receive the 10-Year Parts Limited Warranty, online registration must be completed within 60 days of installation. Online registration is not required in California or Quebec. The duration of warranty coverages in Texas differs in some cases.



The Amana brand ASXH4 High-Efficiency Air Conditioner features a Energy-efficient scroll compressor that provides great temperature and humidity control.



**20
23
SEER2**

Standard Features

- Energy-efficient scroll compressor
- High-density foam compressor sound blanket
- Advanced Copeland® CoreSense™ Technology
- Copper tube/ enhanced aluminum fin coil- 5mm diameter on 1.5-3.0T
- Single-speed PSC condenser fan motor
- Factory-installed filter drier
- Sweat connection service valves with easy access to gauge ports
- Contactor with lug connection
- Ground lug connection
- AHRI Certified; ETL Listed

Cabinet Features

- Removable grille-style top design compliant with UL 60335-2-40
- Venturi for increased velocity of airflow
- Attractive Architectural Gray powder-paint finish with 500-hour salt-spray approval
- Wire fan discharge grille
- Steel louver coil guard with rust-resistant screws
- Top and side maintenance access
- Single-panel access to controls with space provided for field-installed accessories
- When properly anchored, meets the 2020 Florida Building Code unit integrity requirements for hurricane-type winds (Anchor bracket kits available.)

ASXN4 / Energy-Efficient / 14.3 SEER2

Model	Nominal Capacity (Tons)	Voltage-Phase	Dimensions			Service Valve		dBs	Ship Weight (lbs)
			W"	D"	H"	Liquid"	Suction"		
ASXN401810A*	1.5	208/230-1	26	26	27	3/8"	3/4"	71	136
ASXN402410A*	2	208/230-1	26	26	32½	3/8"	3/4"	72	153
ASXN403010A*	2.5	208/230-1	29	29	39½	3/8"	7/8"	72	180
ASXN403610A*	3	208/230-1	35½	35½	35¾	3/8"	7/8"	72	210
ASXN404210A*	3.5	208/230-1	35½	35½	39½	3/8"	7/8"	71	248
ASXN404810A*	4	208/230-1	35½	35½	39½	3/8"	7/8"	73	248
ASXN406010A*	5	208/230-1	35½	35½	36½	3/8"	7/8"	75	282

Daikin Comfort Technologies Manufacturing, L.P. reserves the right to discontinue, or change at any time, specifications or designs without notice or without incurring obligations.

Limited Warranty*

* Complete warranty details available from your local dealer or at www.ama-hac.com. To receive the 10-Year Parts Limited Warranty, online registration must be completed within 60 days of installation. Online registration is not required in California or Quebec. The duration of warranty coverages in Texas differs in some cases.



The **Amana** brand ASXN4 Energy-Efficient Air Conditioner features an energy-efficient compressor that provides great temperature and humidity control.



**20
23
SEER2**

Standard Features

- Energy-efficient compressor
- High-density foam compressor sound blanket on 1.5-2.5T
- Copper tube/ enhanced aluminum fin coil- 5mm diameter on 1.5-4.0T
- Single-speed PSC condenser fan motor
- Factory-installed filter drier
- Sweat connection service valves with easy access to gauge ports
- Contactor with lug connection
- Ground lug connection
- AHRI Certified; ETL Listed

Cabinet Features

- Removable grille-style top design compliant with UL 60335-2-40
- Venturi for increased velocity of airflow
- Attractive Architectural Gray powder-paint finish with 500-hour salt-spray approval
- Wire fan discharge grille
- Steel louver coil guard with rust-resistant screws
- Compact footprint
- Top and side maintenance access
- Single-panel access to controls with space provided for field-installed accessories
- When properly anchored, meets the 2020 Florida Building Code unit integrity requirements for hurricane-type winds (Anchor bracket kits available.)

SPLIT SYSTEM AIR CONDITIONERS

ASXH3 / Energy-Efficient / 13.4 SEER2

Model	Nominal Capacity (Tons)	Voltage-Phase	Dimensions			Service Valve		dBs	Ship Weight (lbs)
			W"	D"	H"	Liquid"	Suction"		
ASXH3N1810A*	1.5	208/230-1	26	26	27	3/8"	3/4"	68	135
ASXH3N2410A*	2	208/230-1	26	26	32½	3/8"	3/4"	68	149
ASXH3N3010A*	2.5	208/230-1	29	29	32½	3/8"	3/4"	72	166
ASXH3N3610A*	3	208/230-1	29	29	32½	3/8"	3/4"	70	168
ASXH3N4210A*	3.5	208/230-1	29	29	39½	3/8"	7/8"	69	203
ASXH3N4810A*	4	208/230-1	35½	35½	35¾	3/8"	7/8"	73	235
ASXH3N6010A*	5	208/230-1	35½	35½	39½	3/8"	7/8"	73	247

Daikin Comfort Technologies Manufacturing, L.P. reserves the right to discontinue, or change at any time, specifications or designs without notice or without incurring obligations.

Limited Warranty*

* Complete warranty details available from your local dealer or at www.amana-hac.com. To receive the 10-Year Parts Limited Warranty, online registration must be completed within 60 days of installation. Online registration is not required in California or Quebec. The duration of warranty coverages in Texas differs in some cases.



The Amana brand ASXH3 Energy-Efficient Air Conditioner uses R-410A chlorine-free refrigerant. The ASXH3 features an energy-efficient scroll compressor that provides great temperature and humidity control.



Standard Features

- Energy-efficient scroll compressor
- High-density foam compressor sound blanket
- Advanced Copeland® CoreSense™ Technology
- Copper tube/ enhanced aluminum fin coil- 5mm diameter
- Single-speed PSC condenser fan motor
- Factory-installed filter drier
- Sweat connection service valves with easy access to gauge ports
- Contactor with lug connection
- Ground lug connection
- AHRI Certified; ETL Listed

Cabinet Features

- Removable grille-style top design compliant with UL 60335-2-40
- Venturi for increased velocity of airflow
- Attractive Architectural Gray powder-paint finish with 500-hour salt-spray approval
- Wire fan discharge grille
- Steel louver coil guard
- Top and side maintenance access
- Single-panel access to controls with space provided for field-installed accessories



ASXN3 / Energy-Efficient / 13.4 SEER2

Model	Nominal Capacity (Tons)	Voltage-Phase	Dimensions			Service Valve		dBs	Ship Weight (lbs)
			W"	D"	H"	Liquid"	Suction"		
ASXN3N1810A*	1.5	208/230-1	26	26	27	3/8"	3/4"	73	130
ASXN3N2410A*	2	208/230-1	26	26	32½	3/8"	3/4"	73	138
ASXN3N3010A*	2.5	208/230-1	29	29	32½	3/8"	3/4"	76	143
ASXN3N3610A*	3	208/230-1	29	29	32½	3/8"	3/4"	71	168
ASXN3N4210A*	3.5	208/230-1	29	29	39½	3/8"	7/8"	70	203
ASXN3N4810A*	4	208/230-1	35½	35½	35¾	3/8"	7/8"	74	235
ASXN3N6010A*	5	208/230-1	35½	35½	39½	3/8"	7/8"	74	247

Daikin Comfort Technologies Manufacturing, L.P. reserves the right to discontinue, or change at any time, specifications or designs without notice or without incurring obligations.

Limited Warranty*

* Complete warranty details available from your local dealer or at www.amana-hac.com. To receive the 10-Year Parts Limited Warranty, online registration must be completed within 60 days of installation. Online registration is not required in California or Quebec. The duration of warranty coverages in Texas differs in some cases.



The **Amana** brand ASXN3 Energy-Efficient Air Conditioner uses R-410A chlorine-free refrigerant. The ASXN3 features an energy-efficient compressor that provides great temperature and humidity control.



Standard Features

- Energy-efficient compressor
- Copper tube/ enhanced aluminum fin coil- 5mm diameter
- Single-speed PSC condenser fan motor
- Factory-installed filter drier
- Sweat connection service valves with easy access to gauge ports
- Contactor with lug connection
- Ground lug connection
- AHRI Certified; ETL Listed

Cabinet Features

- Removable grille-style top design compliant with UL 60335-2-40
- Venturi for increased velocity of airflow
- Attractive Architectural Gray powder-paint finish with 500-hour salt-spray approval
- Wire fan discharge grille
- Steel louver coil guard
- Top and side maintenance access
- Single-panel access to controls with space provided for field-installed accessories



ASZV9 / Variable-Speed / Inverter-Driven / High-Efficiency / Up to 22.5 SEER2 & 8.2 HSPF2

Model	Nominal Capacity (Tons)	Voltage-Phase	Dimensions			Service Valve		dBs ¹	Ship Weight (lbs)	Energy Star® 2023
			W"	D"	H"	Liquid	Suction			
ASZV902410A*	2	208-230/1	35½	35½	38¼	¾"	¾"	68	243	Most Efficient ²
ASZV903610A*	3	208-230/1	35½	35½	41¼	¾"	7/8"	70	318	Most Efficient ²
ASZV904810A*	4	208-230/1	35½	35½	41¼	¾"	7/8"	75	318	Most Efficient ²
ASZV906010A*	5	208-230/1	35½	35½	41¼	¾"	7/8"	75	318	No

¹ Minimum/Intermediate/Maximum Sound levels

² Products that are recognized as the Most Efficient of **ENERGY STAR**® in 2023 prevent greenhouse gas emissions by meeting rigorous energy efficiency performance levels set by the U.S. Environmental Protection Agency. Select combinations are recognized as the Most Efficient of **ENERGY STAR**® in 2023. Visit the following website for more information: www.energystar.gov/products/most_efficient.

Daikin Comfort Technologies Manufacturing, L.P. reserves the right to discontinue, or change at any time, specifications or designs without notice or without incurring obligations.

Limited Warranty*

* Complete warranty details available from your local dealer or at www.amana-hac.com. To receive the Lifetime Unit Replacement Limited Warranty (good for as long as you own your home) and 10-Year Parts Limited Warranty, online registration must be completed within 60 days of installation. Online registration is not required in California or Quebec. The duration of warranty coverages in Texas differs in some cases.



The Amana brand ASZV9 Heat Pump contains a variable-speed, high-efficiency compressor, which provides great temperature and humidity control for the consumer who desires superb comfort and quiet operation.



Standard Features

- Variable-speed swing compressors
- High-density compressor sound blanket
- Integrated communicating ComfortBridge™ Technology
- Commissioning and diagnostics via indoor board Bluetooth with the CoolCloud™ phone and tablet application
- Amana control algorithmic logic
- In communicating mode, only two low-voltage wires to outdoor unit required
- Diagnostic indicator lights, seven-segment LED display, and fault code storage
- Field-selectable boost mode increases compressor speed during unusually high loads
- Quiet DC outdoor fan motor
- Fully charged for 15' of tubing length
- Field-installed bi-flow filter drier
- Coil and ambient temperature sensors
- Suction pressure transducer (in cooling mode)
- Sweat connection service valves with easy access to gauge ports
- AHRI Certified; ETL Listed

Cabinet Features

- Heavy-gauge galvanized-steel cabinet
- Removable grille-style top design compliant with UL 60335-2-40
- Venturi for increased velocity of airflow
- Custom two-tone gray powder-paint finish
- 500-hour salt-spray tested
- Wire fan discharge grille
- Steel louver coil guard
- Top and side maintenance access
- Single-panel access to controls with space provided for field-installed accessories
- When properly anchored, meets the 2020 Florida Building Code unit integrity requirements for hurricane-type winds (Anchor bracket kits available.)

ASZC7 / High-Efficiency / Communicating / Up to 17.2 SEER2 and 8.2 HSPF2

Model	Nominal Capacity (Tons)		Voltage-Phase	Dimensions			Service Valve		dBs	Ship Weight (lbs)	Energy Star® 2023
	Cooling ¹	Heating ¹		W"	D"	H"	Liquid"	Suction"			
ASZC702410A*	2	2	208/230-1	35½	35½	39 1/2	¾"	¾"	71	239	Most Efficient ²
ASZC703610A*	3	3	208/230-1	35½	35½	35 3/4	¾"	7/8"	75	277	Most Efficient ²
ASZC704810A*	4	4	208/230-1	35½	35½	41 5/8	¾"	1½"	77	327	Most Efficient ²
ASZC706010A*	5	5	208/230-1	35½	35½	41 5/8	¾"	1½"	78	335	Energy Star ¹

² Products that are recognized as the Most Efficient of **ENERGY STAR**® in 2023 prevent greenhouse gas emissions by meeting rigorous energy efficiency performance levels set by the U.S. Environmental Protection Agency. Select combinations are recognized as the Most Efficient of **ENERGY STAR**® in 2023. Visit the following website for more information: www.energystar.gov/products/most_efficient.

¹ Proper sizing and installation of equipment is critical to achieve optimal performance. Split system air conditioners and heat pumps must be matched with appropriate coil components to meet ENERGY STAR criteria. Ask your contractor for details or visit www.energystar.gov. Products that are recognized as the Most Efficient of ENERGY STAR® in 2023 prevent greenhouse gas emissions by meeting rigorous energy efficiency performance levels set by the U.S. Environmental Protection Agency.

Daikin Comfort Technologies Manufacturing, L.P. reserves the right to discontinue, or change at any time, specifications or designs without notice or without incurring obligations

Limited Warranty*

* Complete warranty details available from your local dealer or at www.amana-hac.com. To receive the Lifetime Unit Replacement Limited Warranty (good for as long as you own your home) and 10-Year Parts Limited Warranty, online registration must be completed within 60 days of installation. Online registration is not required in California or Quebec. The duration of warranty coverages in Texas differs in some cases.



The **Amana** brand ASZC7 Heat Pump contains a high-efficiency compressor, which provides great temperature and humidity control for the consumer who desires superb comfort and quiet operation.



Standard Features

- Two-Stage Copeland® UltraTech scroll compressor
- High-density foam compressor sound blanket
- Integrated communicating ComfortBridge™ technology
- Commissioning and diagnostics via indoor board Bluetooth with the CoolCloud™ phone and tablet application
- ComfortAlert™ built in diagnostics
- Copper tube/enhanced aluminum fin coil - 5mm on 2.0-3.0T
- Efficient, two-speed ECM condenser fan motor
- Simple low-voltage wiring to outdoor unit in communicating mode
- Diagnostic indicator lights and storage of six fault codes
- Color-coded terminal strip for non-communicating set-up
- High- and low-pressure switches
- Time-delay technology with short-cycle protection to ensure quiet, reliable defrost
- Factory-installed bi-flow liquid-line filter drier
- Factory-installed suction-line accumulator

- Factory-installed compressor crankcase heater
- Factory-installed high-capacity muffler
- Factory-installed coil and ambient temperature sensors
- AHRI Certified; ETL Listed

Cabinet Features

- Grille-style sound control top design
- Custom Nickel Gray powder-paint finish
- 500-hour salt-spray tested
- Wire fan discharge grille
- Steel louver coil guard
- Single panel access to controls with space provided for field-installed accessories
- Sweat connection service valves with easy access to gauge ports
- When properly anchored, meets the 2020 Florida Building Code unit integrity requirements for hurricane-type winds (Anchor bracket kits available.)

SPLIT SYSTEM **HEAT PUMPS**

ASZS6 / Amana S-Series / Inverter-Driven / Up to 17.5 SEER2 & 8.5 HSPF2

	ASZS6 01810A*	ASZS6 02410A*	ASZS6 03010A*	ASZS6 03610A*	ASZS6 04210A*	ASZS6 04810A*	ASZS6 06010A*
CAPACITIES (AHRI RATED)							
Max. Cooling (BTU/h)	16,600	22,200	27,800	33,600	39,500	45,000	53,000
Max. Heating (BTU/h)	17,400	23,200	28,800	34,600	40,000	45,500	54,500
AMBIENT OPERATION RANGE							
COOLING (*FDB(*CDB))	0 to 115 (-17.8 to 46.1)						
HEATING (*FDB(*CDB))	-10 to 70 (-23.3 to 21.1)						
COMPRESSOR							
Type	Swing	Swing	Swing	Swing	Swing	Swing	Swing
RLA	10.0	13.4	16.8	16.8	25.5	25.5	26.9
CONDENSER FAN MOTOR							
Horsepower	0.09	0.09	0.20	0.20	0.36	0.36	0.36
FLA	1.15	1.15	2.00	2.00	1.63	1.63	1.63
REFRIGERATION SYSTEM							
Refrigerant Line Size ¹							
Liquid Line Size ("O.D.)	3/8"	3/8"	3/8"	3/8"	3/8"	3/8"	3/8"
Suction Line Size ("O.D.)	3/4"	3/4"	7/8"	7/8"	1 1/8"	1 1/8"	1 1/8"
Refrigerant Connection Size							
Liquid Valve Size ("O.D.)	3/8"	3/8"	3/8"	3/8"	3/8"	3/8"	3/8"
Suction Valve Size ("O.D.)	3/4"	3/4"	7/8"	7/8"	7/8"	7/8"	7/8"
Valve Connection Type	Front Sealing	Front Sealing	Front Sealing	Front Sealing	Front and Back Sealing	Front and Back Sealing	Front and Back Sealing
Refrigerant Charge (oz.)	81	81	88	88	118	118	127
Expansion Device	EEV	EEV	EEV	EEV	EEV	EEV	EEV
Superheat at Service Valve	Auto-control	Auto-control	Auto-control	Auto-control	Auto-control	Auto-control	Auto-control
Subcooling at Service Valve	10±1°F	12±1°F	14±1°F	15±1°F	8±1°F	9±1°F	9±1°F
ELECTRICAL DATA							
Voltage / Phase (60 Hz)	208-230/1	208-230/1	208-230/1	208-230/1	208-230/1	208-230/1	208-230/1
Minimum Circuit Ampacity ²	14.6	18.8	23.9	23.9	34.4	34.4	36.2
Max. Overcurrent Protection ³	15	20	25	25	35	35	40
Min / Max Volts	197/253	197/253	197/253	197/253	197/253	197/253	197/253
Electrical Conduit Size	1/2"	1/2"	1/2"	1/2"	1/2" or 3/4"	1/2" or 3/4"	1/2" or 3/4"
EQUIPMENT WEIGHT (LBS)							
	122	122	132	137	168	168	179
SHIP WEIGHT (LBS)							
	137	137	147	151	185	185	198

¹ Tested and rated in accordance with ANSI/AHRI Standard 210/240

² Wire size should be determined in accordance with National Electrical Codes; extensive wire runs will require larger wire sizes

³ Must use time-delay fuses or HACR-type circuit breakers of the same size as noted.

NOTES

- Always check the S&R plate for electrical data on the unit being installed.
- Installer will need to supply 3/8" to 1 1/8" adapters for suction line connections.
- Unit is charged with refrigerant for 15' of 3/8" liquid line. System charge must be adjusted per Installation Instructions Final Charge Procedure. (See table below for allowable line set diameter)
- Quiet-mode - provides enhanced acoustical comfort, up to 3 different sound levels (as low as 45dBA)



Limited Warranty*

* Complete warranty details available from your local dealer or at www.amana-hac.com. To receive the Lifetime Unit Replacement Limited Warranty (good for as long as you own your home) and 10-Year Parts Limited Warranty, online registration must be completed within 60 days of installation. Online registration is not required in California or Quebec. The duration of warranty coverages in Texas differs in some cases.



The Amana® brand ASZS6 heat pump features energy efficiencies and operating sound levels that are among the best in the residential ducted heating and cooling industry. The ASZS6 contains a variable speed, high-efficiency compressor. This unit is designed for the consumer who desires superb comfort and quiet operation.

ASZH5 / High-Efficiency Scroll / Up to 15.2 SEER2 & 7.8 HSPF2

Model	Nominal Capacity (Tons)		Voltage-Phase	Dimensions			Service Valve		dBs	Ship Weight (lbs)
	Cooling ¹	Heating ¹		W"	D"	H"	Liquid"	Suction"		
ASZH501810A*	1½	1½	208/230-1	29	29	39½	¾"	¾"	68	186
ASZH502410A*	2	2	208/230-1	35½	35½	35¾	¾"	¾"	72	213
ASZH503010A*	2½	2½	208/230-1	35½	35½	39½	¾"	¾"	69	235
ASZH503610A*	3	3	208/230-1	35½	35½	39½	¾"	7/8"	72	242
ASZH504210A*	3½	3½	208/230-1	35½	35½	35¾	¾"	7/8"	75	284
ASZH504810A*	4	4	208/230-1	35½	35½	36½	¾"	7/8"	73	292
ASZH506010A*	5	5	208/230-1	35½	35½	41¾	¾"	7/8"	75	329

¹Tons of Refrigeration

Daikin Comfort Technologies Manufacturing, L.P. reserves the right to discontinue, or change at any time, specifications or designs without notice or without incurring obligations.

Limited Warranty*

* Complete warranty details available from your local dealer or at www.amana-hac.com. To receive the Lifetime Unit Replacement Limited Warranty (good for as long as you own your home) and 10-Year Parts Limited Warranty, online registration must be completed within 60 days of installation. Online registration is not required in California or Quebec. The duration of warranty coverages in Texas differs in some cases.



The Amana brand ASZH5 High-Efficiency Heat Pump, with its 15.2 SEER2 rating, will reduce energy consumption throughout the life of the system compared to lower SEER products.



**20
23
SEER2**

Standard Features

- High-Efficiency Copeland® scroll compressor
- Advanced Copeland® CoreSense technology
- Copper tube/enhanced aluminum fin coil-5mm diameter on 1.5-3.5T
- SmartShift® technology to ensure quiet reliable defrost
- Factory-installed bi-flow liquid-line filter drier
- Factory-installed suction-line accumulator
- Factory-installed compressor crankcase heater
- Factory-installed high-capacity muffler
- High and low-pressure switches
- Service valves with sweat connections and easy access to gauge ports
- Copper tube / enhanced aluminum fin coil
- AHRI Certified; ETL Listed

Cabinet Features

- Removable grille-style top design compliant with UL 60335-2-40
- Venturi for increased velocity of airflow
- Heavy-gauge galvanized-steel cabinet
- Baked-on powder-paint finish with 500-hour salt-spray approval
- Steel louver coil guard with rust-resistant screws
- Top and side maintenance access
- Single-panel access to controls with space provided for field-installed for field-installed accessories
- When properly anchored, it meets the 2020 Florida Building Code unit integrity requirements for hurricane-type winds (Anchor bracket kits available.)

SPLIT SYSTEM HEAT PUMPS

ASZH4 / High-Efficiency / Up to 14.3 SEER2 and 7.5 HSPF2

Model	Nominal Capacity (Tons)		Voltage-Phase	Dimensions			Service Valve		dBs	Ship Weight (lbs)
	Cooling ¹	Heating ¹		W"	D"	H"	Liquid"	Suction"		
ASZH401810A*	1½	1½	208/230-1	29	29	35 11/16	¾"	¾"	68	179
ASZH402410A*	2	2	208/230-1	29	29	35 11/16	¾"	¾"	72	179
ASZH403010A*	2½	2½	208/230-1	29	29	39 8/16	¾"	¾"	75	190
ASZH403610A*	3	3	208/230-1	35½	35½	39 10/16	¾"	7/8"	72	234
ASZH404210A*	3½	3½	208/230-1	35½	35½	35 13/16	¾"	7/8"	75	284
ASZH404810A*	4	4	208/230-1	35½	35½	36 7/16	¾"	7/8"	74	292
ASZH406010A*	5	5	208/230-1	35½	35½	41 10/16	¾"	7/8"	75	325

Daikin Comfort Technologies Manufacturing, L.P. reserves the right to discontinue, or change at any time, specifications or designs without notice or without incurring obligations.

Limited Warranty*

* Complete warranty details available from your local dealer or at www.amana-hac.com. To receive the 10-Year Parts Limited Warranty, online registration must be completed within 60 days of installation. Online registration is not required in California or Quebec. The duration of warranty coverages in Texas differs in some cases.



The Amana brand ASZH4 high efficiency Heat Pump, with its ratings up to 14.3 SEER2, will reduce energy consumption throughout the life of the system compared to lower SEER products.



**20
23
SEER2**

Standard Features

- High-Efficiency Copeland® scroll compressor
- Advanced Copeland® CoreSense technology
- Enhanced aluminum fin coil with 5mm diameter copper tubes in 1.5- to 3.5-ton
- SmartShift® technology to ensure quiet reliable defrost
- Single-speed PSC condenser fan motor
- Factory-installed bi-flow liquid-line filter drier
- Factory-installed suction-line accumulator
- Factory-installed compressor crankcase heater
- Factory-installed high-capacity muffler
- High and low-pressure switches
- Service valves with sweat connections and easy access to gauge ports
- AHRI Certified; ETL Listed

Cabinet Features

- Removable grille-style top design compliant with UL 60335-2-40
- Heavy-gauge galvanized-steel cabinet
- Baked-on powder-paint finish with 500-hour salt-spray approval
- Steel louver coil guard with rust-resistant screws
- Top and side maintenance access
- Single-panel access to controls with space provided for field-installed for field-installed accessories
- When properly anchored, it meets the 2020 Florida Building Code unit integrity requirements for hurricane-type winds (Anchor bracket kits available.)

ASZN4 / Energy-Efficient / Up to 14.3 SEER2 and 7.5 HSPF2

Model	Nominal Capacity (Tons)		Voltage-Phase	Dimensions			Service Valve		dBs	Ship Weight (lbs)
	Cooling ¹	Heating ¹		W"	D"	H"	Liquid"	Suction"		
ASZN401810A*	1½	1½	208/230-1	29	29	35 11/16	¾"	¾"	70	176
ASZN402410A*	2	2	208/230-1	29	29	35 11/16	¾"	¾"	74	175
ASZN403010A*	2½	2½	208/230-1	29	29	39 8/16	¾"	¾"	75	190
ASZN403610A*	3	3	208/230-1	35½	35½	39 10/16	¾"	7/8"	72	234
ASZN404210A*	3½	3½	208/230-1	35½	35½	35 13/16	¾"	7/8"	75	284
ASZN404810A*	4	4	208/230-1	35½	35½	36 7/16	¾"	7/8"	74	292
ASZN406010A*	5	5	208/230-1	35½	35½	41 10/16	¾"	7/8"	75	325

Daikin Comfort Technologies Manufacturing, L.P. reserves the right to discontinue, or change at any time, specifications or designs without notice or without incurring obligations.

Limited Warranty*

* Complete warranty details available from your local dealer or at www.ama-hac.com. To receive the 10-Year Parts Limited Warranty, online registration must be completed within 60 days of installation. Online registration is not required in California or Quebec. The duration of warranty coverages in Texas differs in some cases.



The Amana brand ASZN4 Energy-Efficient Heat Pump, with its ratings up to 14.3 SEER2, will reduce energy consumption throughout the life of the system compared to lower SEER products.



Standard Features

- Energy-efficient compressor
- Enhanced aluminum fin coil with 5 mm diameter copper tubes in 1.5- to 3.5-ton
- SmartShift® technology to ensure quiet reliable defrost
- Single-speed PSC condenser fan motor
- Factory-installed bi-flow liquid-line filter drier
- Factory-installed suction-line accumulator
- Factory-installed compressor crankcase heater
- Factory-installed high-capacity muffler
- High and low-pressure switches
- Service valves with sweat connections and easy access to gauge ports
- AHRI Certified; ETL Listed

Cabinet Features

- Removable grille-style top design compliant with UL 60335-2-40
- Heavy-gauge galvanized-steel cabinet
- Baked-on powder-paint finish with 500-hour salt-spray approval
- Steel louver coil guard with rust-resistant screws
- Top and side maintenance access
- When properly anchored, it meets the 2020 Florida Building Code unit integrity requirements for hurricane-type winds (Anchor bracket kits available.)



GAS FURNACES



AMVM97 (B) / Modulating / Variable-Speed ECM / Up to 97% AFUE

Model	High-Fire Rate (BTU/h)		Low-Fire Rate (BTU/h)		AFUE %	Tons A/C ¹	Dimensions			Ship Weight (lbs)	ENERGY STAR® Certified
	Input	Output	Input	Output			W"	D"	H"		
AMVM970603BNA	60,000	58,800	30,000	29,400	97	3	17½	28⅞	34½	118	YES
AMVM970803BNA	80,000	77,600	40,000	38,800	97	3	17½	28⅞	34½	121	YES
AMVM970804CNA	80,000	78,400	40,000	39,200	97	4	21	28⅞	34½	142	YES
AMVM971005CNA	100,000	97,000	50,000	48,500	97	5	21	28⅞	34½	144	YES
AMVM971205DNA	120,000	116,400	60,000	58,200	97	5	24½	28⅞	34½	157	YES

¹ @ 0.1"-0.8" ESP

Daikin Comfort Technologies Manufacturing, L.P. reserves the right to discontinue, or change at any time, specifications or designs without notice or without incurring obligations..

Limited Warranty*

* Complete warranty details available from your local dealer or at www.amana-hac.com. To receive the Lifetime Unit Replacement Limited Warranty (good for as long as you own your home) and 10-Year Parts Limited Warranty, online registration must be completed within 60 days of installation. Online registration is not required in California or Quebec. The duration of warranty coverages in Texas differs in some cases..



Amana brand AMVM97 Modulating Variable-Speed Gas Furnace provides exceptional indoor comfort and features a stainless-steel tubular heat exchanger and durable silicon nitride ignition system. This quiet furnace delivers a money-saving efficiency of up to 97% AFUE compared to lower AFUE furnaces.



Standard Features

- Integrated communicating ComfortBridge™ Technology
- Compatibility with the Amana brand smart thermostat and other Amana brand communicating equipment
- Commissioning and diagnostics via on board Bluetooth with the CoolCloud™ phone and tablet application
- Heavy-duty stainless-steel tubular heat exchanger
- Stainless-steel secondary heat exchanger
- Self-calibrating modulating gas valve auto-configure for each installation
- Durable Silicon Nitride igniter
- Quiet two-speed induced draft blower
- Self-diagnostic control board with constant memory fault code history output to a dual 7-segment display
- Color-coded low-voltage terminals with provisions for electronic air cleaner
- Efficient and quiet variable-speed airflow system gently ramps up or down according to heating or cooling demand
- Multiple continuous fan speed options offer quiet air circulation
- Auto-Comfort and enhanced dehumidification modes available

- All models comply with California 40 ng/J Low NO_x emissions standard
- Can no longer be installed in California's South Coast Air Quality Management District (SCAQMD) on or after October 1, 2019.

Cabinet Features

- Designed for multi-position installation: upflow, horizontal left or right
- Certified for direct vent (2-pipe) or non-direct vent (1-pipe)
- Easy-to-install top venting with optional side venting
- Convenient left or right connection for gas and electrical service
- Cabinet air leakage ≤ 2%
- Heavy-gauge steel cabinet with durable finish
- Fully insulated heat exchanger and blower section
- Airtight solid bottom or side return with easy-cut tabs for effortless removal in bottom air-inlet applications

ACVM97 (B) / Modulating / Variable-Speed ECM / Up to 97% AFUE

Model	High-Fire Rate ¹		Low-Fire Rate ¹		AFUE %	Tons A/C ²	Dimensions			Ship Weight (lbs)	ENERGY STAR® Certified
	Input	Output	Input	Output			W"	D"	H"		
ACVM970603BNA	60,000	58,200	30,000	29,100	97	3	17½	28⅞	34½	117	YES
ACVM970803BNA	80,000	77,600	40,000	38,800	97	3	17½	28⅞	34½	122	YES
ACVM970804CNA	80,000	77,600	40,000	38,800	97	4	21	28⅞	34½	144	YES
ACVM971005CNA	100,000	97,000	50,000	48,500	97	5	21	28⅞	34½	146	YES

¹ BTU/H ² @ 0.1"-0.8" ESP

Daikin Comfort Technologies Manufacturing, L.P. reserves the right to discontinue, or change at any time, specifications or designs without notice or without incurring obligations.

Limited Warranty*

* Complete warranty details available from your local dealer or at www.amana-hac.com. To receive the Lifetime Unit Replacement Limited Warranty (good for as long as you own your home) and 10-Year Parts Limited Warranty, online registration must be completed within 60 days of installation. Online registration is not required in California or Quebec. The duration of warranty coverages in Texas differs in some cases..



Amana brand ACVM97 Modulating Variable-Speed Gas Furnace provides exceptional indoor comfort and features a stainless-steel tubular heat exchanger and durable silicon nitride ignition system. This quiet furnace delivers a money-saving efficiency of up to 97% AFUE compared to lower AFUE furnaces.



Standard Features

- Integrated communicating ComfortBridge™ Technology
- Compatibility with the Amana brand smart thermostat and other Amana brand communicating equipment
- Commissioning and diagnostics via on board Bluetooth with the CoolCloud™ phone and tablet application
- Heavy-duty stainless-steel tubular heat exchanger
- Stainless-steel secondary heat exchanger
- Self-calibrating modulating gas valve auto-configure for each installation
- Durable Silicon Nitride igniter
- Quiet two-speed induced draft blower
- Self-diagnostic control board with constant memory fault code history output to a dual 7-segment display
- Color-coded low-voltage terminals with provisions for electronic air cleaner
- Efficient and quiet variable-speed airflow system gently ramps up or down according to heating or cooling demand
- Multiple continuous fan speed options offer quiet air circulation
- Auto-Comfort and enhanced dehumidification modes available

- All models comply with California 40 ng/J Low NO_x emissions standard

- Can no longer be installed in California's South Coast Air Quality Management District (SCAQMD) on or after October 1, 2019.

Cabinet Features

- Designed for multi-position installation: upflow, horizontal left or right
- Certified for direct vent (2-pipe) or non-direct vent (1-pipe)
- Easy-to-install top venting with optional side venting
- Convenient left or right connection for gas and electrical service
- Cabinet air leakage ≤ 2%
- Heavy-gauge steel cabinet with durable finish
- Fully insulated heat exchanger and blower section
- Airtight solid bottom or side return with easy-cut tabs for effortless removal in bottom air-inlet applications

AMVC96 (B) / Two-Stage / Variable-Speed ECM / Up to 96% AFUE

Model	High-Fire Rate ¹		Low-Fire Rate ¹		AFUE %	Tons A/C ²	Dimensions			Ship Weight (lbs)	ENERGY STAR [®] Certified
	Input	Output	Input	Output			W"	D"	H"		
AMVC960403BNB	40,000	38,400	28,000	26,880	96	3	17½	28¾	34½	114	YES
AMVC960603BNB	60,000	57,600	42,000	40,320	96	3	17½	28¾	34½	117	YES
AMVC960803BNB	80,000	76,800	56,000	53,760	96	3	17½	28¾	34½	120	YES
AMVC960804CNB	80,000	76,800	56,000	53,760	96	4	21	28¾	34½	141	YES
AMVC961005CNB	100,000	96,000	70,000	67,200	96	5	21	28¾	34½	143	YES
AMVC961005DNB	100,000	96,000	70,000	67,200	96	5	24½	28¾	34½	153	YES
AMVC961205DNB	120,000	115,200	84,000	80,640	96	5	24½	28¾	34½	156	YES

¹ BTU/H ² @ 0.1"-0.8" ESP

Daikin Comfort Technologies Manufacturing, L.P. reserves the right to discontinue, or change at any time, specifications or designs without notice or without incurring obligations.

Limited Warranty*

* Complete warranty details available from your local dealer or at www.amana-hac.com. To receive the Lifetime Unit Replacement Limited Warranty (good for as long as you own your home) and 10-Year Parts Limited Warranty, online registration must be completed within 60 days of installation. Online registration is not required in California or Quebec. The duration of warranty coverages in Texas differs in some cases.



Amana brand AMVC96 Two-Stage, Variable-Speed Gas Furnace provides exceptional indoor comfort and features a stainless-steel tubular heat exchanger and durable silicon nitride ignition system. This quiet furnace delivers a money-saving efficiency of up to 96% AFUE compared to lower AFUE furnaces.



Standard Features

- Integrated communicating ComfortBridge™ Technology
- Compatibility with the Amana brand smart thermostat and other Amana brand communicating equipment
- Commissioning and diagnostics via on board Bluetooth with the CoolCloud™ phone and tablet application
- Heavy-duty stainless-steel tubular heat exchanger
- Stainless-steel secondary heat exchanger
- Two-stage gas valve provides quiet, economical heating
- Durable Silicon Nitride igniter
- Quiet two-speed induced draft blower
- Compatible with any single-stage thermostat
- Self-diagnostic control board with constant memory fault code history output to a triple 7-segment display
- Color-coded low-voltage terminals with provisions for electronic air cleaner
- Efficient and quiet variable-speed airflow system gently ramps up or down according to heating or cooling demand

- Multiple continuous fan speed options offer quiet air circulation
- Auto-Comfort and enhanced dehumidification modes available
- All models comply with California 40 ng/J Low NOx emissions standard
- Can no longer be installed in California's South Coast Air Quality Management District (SCAQMD) on or after October 1, 2019.

Cabinet Features

- Designed for multi-position installation: upflow, horizontal left or right
- Certified for direct vent (2-pipe) or non-direct vent (1-pipe)
- Easy-to-install top venting with optional side venting
- Convenient left or right connection for gas and electrical service
- Cabinet air leakage (QLeak) ≤ 2%
- Heavy-gauge steel cabinet with durable finish
- Fully insulated heat exchanger and blower section
- Airtight solid bottom or side return with easy-cut tabs for effortless removal in bottom air-inlet applications

ACVC96 (B) / Two-Stage / Variable-Speed ECM / Up to 96% AFUE

Model	High-Fire Rate ¹		Low-Fire Rate ¹		AFUE %	Tons A/C ²	Dimensions			Ship Weight (lbs)	ENERGY STAR® Certified
	Input	Output	Input	Output			W"	D"	H"		
ACVC960403BNB	40,000	38,400	28,000	26,880	96	3	17½	28¾	34½	116	YES
ACVC960603BNB	60,000	57,600	42,000	40,320	96	3	17½	28¾	34½	119	YES
ACVC960804CNB	80,000	76,800	56,000	53,760	96	4	21	28¾	34½	143	YES
ACVC961005CNB	100,000	96,000	70,000	67,200	96	5	21	28¾	34½	145	YES
ACVC961205DNB	120,000	115,200	84,000	80,640	96	5	24½	28¾	34½	158	YES

¹ BTU/H ² @ 0.1"–0.8" ESP

Daikin Comfort Technologies Manufacturing, L.P. reserves the right to discontinue, or change at any time, specifications or designs without notice or without incurring obligations.

Limited Warranty*

* Complete warranty details available from your local dealer or at www.amana-hac.com. To receive the Lifetime Unit Replacement Limited Warranty (good for as long as you own your home) and 10-Year Parts Limited Warranty, online registration must be completed within 60 days of installation. Online registration is not required in California or Quebec. The duration of warranty coverages in Texas differs in some cases.



Amana brand ACVC96 Two-Stage, Variable-Speed Gas Furnace provides exceptional indoor comfort and features a stainless-steel tubular heat exchanger and durable silicon nitride ignition system. This quiet furnace delivers a money-saving efficiency of up to 96% AFUE compared to lower AFUE furnaces.



Product Features

- Integrated communicating ComfortBridge™ Technology
- Compatibility with the Amana brand smart thermostat and other Amana brand communicating equipment
- Commissioning and diagnostics via on board Bluetooth with the CoolCloud™ phone and tablet application
- Heavy-duty stainless-steel tubular heat exchanger
- Stainless-steel secondary heat exchanger
- Two-stage gas valve provides quiet, economical heating
- Durable Silicon Nitride igniter
- Quiet two-speed induced draft blower
- Compatible with any single-stage thermostat
- Self-diagnostic control board with constant memory fault code history output to a triple 7-segment display
- Color-coded low-voltage terminals with provisions for electronic air cleaner
- Efficient and quiet variable-speed airflow system gently ramps up or down according to heating or cooling demand
- Multiple continuous fan speed options offer quiet air circulation
- Auto-Comfort and enhanced dehumidification modes available

- All models comply with California 40 ng/J Low NOx emissions standards
- Can no longer be installed in California's South Coast Air Quality Management District (SCAQMD) on or after October 1, 2019.
- AHRI Certified; ETL Listed

Cabinet Features

- Designed for multi-position installation —downflow, horizontal left or right
- Certified for direct vent (2-pipe) or non-direct vent (1-pipe)
- Convenient left or right connection for gas and electrical service
- Cabinet air leakage ≤ 2%
- Heavy-gauge steel cabinet with durable finish
- Fully insulated heat exchanger and blower section
- Airtight solid bottom or side return with easy cut tabs for effortless removal in bottom air-inlet applications

AM9S96/AC9S96 / Single-Stage / Multi-Speed ECM / Up to 96% AFUE

Model	High-Fire Rate (BTU/h)		AFUE %	Tons A/C ¹	Dimensions			Ship Weight (lbs)
	Input	Output			W"	D"	H"	
AM9S960403AN	40,000	38,400	96	3	14"	28 ⁷ / ₈	34 ¹ / ₂	108
AM9S960603BN	60,000	57,600	96	3	17 ¹ / ₂	28 ⁷ / ₈	34 ¹ / ₂	118
AM9S960803BN	80,000	76,800	96	3	17 ¹ / ₂	28 ⁷ / ₈	34 ¹ / ₂	118
AM9S960804CN	80,000	76,800	96	4	21"	28 ⁷ / ₈	34 ¹ / ₂	141
AM9S960805CN	80,000	76,800	96	5	21"	28 ⁷ / ₈	34 ¹ / ₂	142
AM9S961005CN	100,000	96,000	96	5	21"	28 ⁷ / ₈	34 ¹ / ₂	144
AM9S961205DN	120,000	115,200	96	5	24 ¹ / ₂	28 ⁷ / ₈	34 ¹ / ₂	156
AC9S960403BN	40,000	38,440	96	2	17 ¹ / ₂	28 ⁷ / ₈	34 ¹ / ₂	113
AC9S960603BNA	60,000	57,660	96	3	17 ¹ / ₂	28 ⁷ / ₈	34 ¹ / ₂	116
AC9S960804CN	80,000	76,880	96	4	21"	28 ⁷ / ₈	34 ¹ / ₂	141
AC9S961005CN	100,000	95,000	95	5	21"	28 ⁷ / ₈	34 ¹ / ₂	144
AC9S961205DN	120,000	114,000	95	5	24 ¹ / ₂	28 ⁷ / ₈	34 ¹ / ₂	156

¹ Max tons @ 0.5" ESP

Daikin Comfort Technologies Manufacturing, L.P. reserves the right to discontinue, or change at any time, specifications or designs without notice or without incurring obligations.

Limited Warranty*

* Complete warranty details available from your local dealer or at www.amana-hac.com. To receive the Lifetime Unit Replacement Limited Warranty (good for as long as you own your home) and 10-Year Parts Limited Warranty, online registration must be completed within 60 days of installation. Online registration is not required in California or Quebec. The duration of warranty coverages in Texas differs in some cases.



Amana brand AM9S96/AC9S96 Single-Stage, Multi-Speed Gas Furnaces provide exceptional indoor comfort and feature a stainless-steel tubular heat exchanger and durable silicon nitride ignition system. This quiet furnace delivers a money-saving efficiency of up to 96% AFUE compared to lower AFUE furnaces.



Standard Features

- Heavy-duty stainless-steel tubular heat exchanger
- Stainless-steel secondary heat exchanger
- Single-stage gas valve
- Durable Silicon Nitride igniter
- Quiet single-speed induced draft blower
- Self-diagnostic control board with constant memory fault code history output to a LED
- All models comply with California 40 ng/J Low NOx emissions standard
- Can no longer be installed in California's South Coast Air Quality Management District (SCAQMD) on or after October 1, 2019.
- AHRI Certified; ETL Listed

Cabinet Features

- Designed for multi-position installation — AM9S96: upflow, horizontal left or right AC9S96: downflow, horizontal left or right
- Certified for direct vent (2-pipe) or non-direct vent (1-pipe)
- Easy-to-install top venting with optional side venting — AM9S96/upflow models only
- Convenient left or right connection for gas and electrical service
- Cabinet air leakage (QLeak) ≤ 2%
- Heavy-gauge steel cabinet with durable finish
- Fully insulated heat exchanger and blower section
- Airtight solid bottom or side return with easy-cut tabs for effortless removal in bottom air-inlet applications

AM9C96 / Two-Stage / Multi-Speed ECM / Up to 96% AFUE

Model	High-Fire Rate ¹		Low-Fire Rate ¹		AFUE %	Tons A/C ²	Dimensions			Ship Weight (lbs)
	Input	Output	Input	Output			W"	D"	H"	
AM9C960303ANA	30,000	28,800	21,000	20,160	96	3	14"	28 ⁷ / ₈	34 ¹ / ₂	106
AM9C960403ANA	40,000	38,400	28,000	26,880	96	3	14"	28 ⁷ / ₈	34 ¹ / ₂	106
AM9C960603ANA	60,000	57,600	42,000	40,320	96	3	14"	28 ⁷ / ₈	34 ¹ / ₂	110
AM9C960603BNA	60,000	57,600	42,000	40,320	96	3	17 ¹ / ₂	28 ⁷ / ₈	34 ¹ / ₂	115
AM9C960803BNA	80,000	76,800	56,000	53,760	96	3	17 ¹ / ₂	28 ⁷ / ₈	34 ¹ / ₂	118
AM9C960804CNA	80,000	76,800	100,000	53,760	96	4	21"	28 ⁷ / ₈	34 ¹ / ₂	123
AM9C961004CNA	100,000	96,000	70,000	67,200	96	4	21"	28 ⁷ / ₈	34 ¹ / ₂	140
AM9C961005CNA	100,000	96,000	70,000	67,200	96	5	21"	28 ⁷ / ₈	34 ¹ / ₂	140
AM9C961205DNA	120,000	115,200	84,000	80,640	96	5	24 ¹ / ₂	28 ⁷ / ₈	34 ¹ / ₂	154

¹ BTU/H ² @ 0.1"-0.8" ESP

Daikin Comfort Technologies Manufacturing, L.P. reserves the right to discontinue, or change at any time, specifications or designs without notice or without incurring obligations.

Limited Warranty*

* Complete warranty details available from your local dealer or at www.amana-hac.com. To receive the Lifetime Unit Replacement Limited Warranty (good for as long as you own your home) and 10-Year Parts Limited Warranty, online registration must be completed within 60 days of installation. Online registration is not required in California or Quebec. The duration of warranty coverages in Texas differs in some cases.



Amana brand AM9C96 Two-Stage, Multi-Speed ECM Gas Furnace provides exceptional indoor comfort and features a stainless-steel tubular heat exchanger and durable silicon nitride ignition system. This quiet furnace delivers a money-saving efficiency of up to 96% AFUE compared to lower AFUE furnaces.



Standard Features

- Energy-efficient multi-speed ECM blower motor
- Heavy-duty stainless-steel tubular heat exchanger
- Stainless-steel secondary heat exchanger
- Two-stage gas valve provides quiet, economical heating
- Durable Silicon Nitride igniter
- Quiet two-speed induced draft blower
- Self-diagnostic control board with constant memory fault code history output to a LED
- Color-coded low-voltage terminals with provisions for electronic air cleaner and humidifier
- Low continuous fan speed options offer quiet air circulation
- All models comply with California 40 ng/J Low NO_x emissions standard
- Can no longer be installed in California's South Coast Air Quality Management District (SCAQMD) on or after October 1, 2019.

Cabinet Features

- Designed for multi-position installation: upflow, horizontal left or right
- Certified for direct vent (2-pipe) or non-direct vent (1-pipe)
- Easy-to-install top venting with optional side venting
- Convenient left or right connection for gas and electrical service
- Cabinet air leakage ≤ 2%
- Heavy-gauge steel cabinet with durable finish
- Fully insulated heat exchanger and blower section
- Airtight solid bottom or side return with easy-cut tabs for effortless removal in bottom air-inlet applications

AC9C96 / Two-Stage / Multi-Speed ECM / Up to 96% AFUE

Model	High-Fire Rate ¹		Low-Fire Rate ¹		AFUE %	Tons A/C ²	Dimensions			Ship Weight (lbs)
	Input	Output	Input	Output			W"	D"	H"	
AC9C960403BNA	40,000	38,400	28,000	26,880	96	3	17½	28⅞	34½	112
AC9C960603BNA	60,000	57,600	42,000	40,320	96	3	17½	28⅞	34½	115
AC9C960803BNA	80,000	76,800	56,000	53,760	96	3	17½	28⅞	34½	118
AC9C961005CNA	100,000	96,000	70,000	67,200	96	5	21"	28⅞	34½	140

¹ BTU/H ² @ 0.1"-0.8" ESP

Daikin Comfort Technologies Manufacturing, L.P. reserves the right to discontinue, or change at any time, specifications or designs without notice or without incurring obligations.

Limited Warranty*

* Complete warranty details available from your local dealer or at www.amana-hac.com. To receive the Lifetime Unit Replacement Limited Warranty (good for as long as you own your home) and 10-Year Parts Limited Warranty, online registration must be completed within 60 days of installation. Online registration is not required in California or Quebec. The duration of warranty coverages in Texas differs in some cases..



Amana brand AC9C96 Two-Stage, Multi-Speed ECM Gas Furnace provides exceptional indoor comfort and features a stainless-steel tubular heat exchanger and durable silicon nitride ignition system. This quiet furnace delivers a money-saving efficiency of up to 96% AFUE compared to lower AFUE furnaces.



Standard Features

- Energy-efficient multi-speed ECM blower motor
- Heavy-duty stainless-steel tubular heat exchanger
- Stainless-steel secondary heat exchanger
- Two-stage gas valve provides quiet, economical heating
- Durable Silicon Nitride igniter
- Quiet two-speed induced draft blower
- Self-diagnostic control board with constant memory fault code history output to a LED
- Color-coded low-voltage terminals with provisions for electronic air cleaner and humidifier
- Low continuous fan speed options offer quiet air circulation
- All models comply with California 40 ng/J Low NO_x emissions standard
- Can no longer be installed in California's South Coast Air Quality Management District (SCAQMD) on or after October 1, 2019.

Cabinet Features

- Designed for multi-position installation: down flow, horizontal left or right
- Certified for direct vent (2-pipe) or non-direct vent (1-pipe)
- Easy-to-install top venting with optional side venting
- Convenient left or right connection for gas and electrical service
- Cabinet air leakage ≤ 2%
- Heavy-gauge steel cabinet with durable finish
- Fully insulated heat exchanger and blower section
- Airtight solid bottom or side return with easy-cut tabs for effortless removal in bottom air-inlet applications

AM9S96-U / Ultra Low NOx / Single-Stage / Multi-Speed ECM / Up to 96% AFUE

Model	High-Fire Rate (BTU/h)		AFUE %	Tons A/C ¹	Dimensions			Ship Weight (lbs)
	Input	Output			W"	D"	H"	
AM9S960403BU	40,000	38,400	96	3	17½	28⅞	34½	115
AM9S960603BU	60,000	57,600	96	3	17½	28⅞	34½	120
AM9S960805BU	80,000	76,800	96	5	21"	28⅞	34½	145

¹ Max tons @ 0.5" ESP

Daikin Comfort Technologies Manufacturing, L.P. reserves the right to discontinue, or change at any time, specifications or designs without notice or without incurring obligations.

Limited Warranty*

* Complete warranty details available from your local dealer or at www.amana-hac.com. To receive the Lifetime Unit Replacement Limited Warranty (good for as long as you own your home) and 10-Year Parts Limited Warranty, online registration must be completed within 60 days of installation. Online registration is not required in California or Quebec. The duration of warranty coverages in Texas differs in some cases.



Amana brand AM9S96-U Single-Stage, Multi-Speed ECM Gas Furnaces provide exceptional indoor comfort and feature a stainless-steel tubular heat exchanger and durable silicon nitride ignition system. This quiet furnace delivers a money-saving efficiency of up to 96% AFUE compared to lower AFUE furnaces.



Standard Features

- Heavy-duty stainless-steel tubular heat exchanger
- Stainless-steel secondary heat exchanger
- Single-stage gas valve
- Durable Silicon Nitride igniter
- Quiet multi-speed induced draft blower
- Self-diagnostic control board with constant memory fault code history output to a LED
- Eligible for installation in California's South Coast Air Quality Management District (SCAQMD) and San Joaquin Valley Air Pollution Control District (SJVUAPCD). This furnace complies with the 14 ng/J NOx emission limit in SCAQMD Rule 1111 and SJVUAPCD Rule 4905.
- AHRI Certified; ETL Listed

Cabinet Features

- Designed for multi-position installation —AM9S96: upflow, horizontal left or right
- Certified for direct vent (2-pipe) or non-direct vent (1-pipe)
- Easy-to-install top venting with optional side venting — AM9S96/upflow models only
- Convenient left or right connection for gas and electrical service
- Cabinet air leakage (QLeak) ≤ 1.4%
- Heavy-gauge steel cabinet with durable finish
- Fully insulated heat exchanger and blower section
- Airtight solid bottom or side return with easy-cut tabs for effortless removal in bottom air-inlet applications

AMVS96-U / Ultra Low NOx / Single-Stage / Variable-Speed ECM / Up to 96% AFUE

Model	High-Fire Rate (BTU/h)		AFUE %	Tons A/C ¹	Dimensions			Ship Weight (lbs)
	Input	Output			W"	D"	H"	
AMVS960603BUA*	60,000	57,600	96	3	17½	28⅞	34½	122
AMVS960805CUA*	80,000	76,800	96	5	21"	28⅞	34½	147

¹ Max tons @ 0.5" ESP

Daikin Comfort Technologies Manufacturing, L.P. reserves the right to discontinue, or change at any time, specifications or designs without notice or without incurring obligations.

Limited Warranty*

* Complete warranty details available from your local dealer or at www.amana-hac.com. To receive the Lifetime Heat Exchanger Limited Warranty, the Lifetime Unit Replacement Limited Warranty (in both cases good for as long as you own your home) and 10-Year Parts Limited Warranty, online registration must be completed within 60 days of installation. Online registration is not required in California or Quebec. The duration of warranty coverages in Texas differs in some cases.



Amana brand AMVS96-U Single-Stage, Variable-Speed ECM Gas Furnaces provide exceptional indoor comfort and feature a stainless-steel tubular heat exchanger and durable silicon nitride ignition system. This quiet furnace delivers a money-saving efficiency of up to 96% AFUE compared to lower AFUE furnaces.



Standard Features

- Integrated communicating ComfortBridge™ Technology
- Compatibility with the **Amana** brand smart thermostat and other **Amana** brand communicating equipment
- Commissioning and diagnostics via indoor board Bluetooth with the CoolCloud™ phone and tablet application
- Heavy-duty stainless-steel tubular heat exchanger
- Super-ferritic Stainless-steel secondary heat exchanger
- Single-stage gas valve
- Durable Silicon Nitride igniter
- Quiet modulating induced draft blower
- Self-diagnostic control board with constant memory fault code history output to 3 x 7 segment display
- Eligible for installation in California's South Coast Air Quality Management District (SCAQMD) and San Joaquin Valley Air Pollution Control District (SJVUAPCD). This furnace complies with the 14 ng/J NOx emission limit in SCAQMD Rule 1111 and SJVUAPCD Rule 4905.
- EMI line filter kit must be installed. (It is intended for field installation only on "VS" model, Bluetooth® capable Ultra Low NOx Gas Furnaces. The purpose of the EMI Filter is to reduce electromagnetic interference between the furnace and other electrical devices)
- AHRI Certified; ETL Listed

Cabinet Features

- Designed for multi-position installation — upflow, horizontal left or right
- Certified for direct vent (2-pipe) or non-direct vent (1-pipe)
- Easy-to-install top venting with optional side venting
- Convenient left or right connection for gas and electrical service
- Cabinet air leakage (QLeak) ≤ 1.4%
- Heavy-gauge steel cabinet with durable finish
- Fully insulated heat exchanger and blower section
- Airtight solid bottom or side return with easy-cut tabs for effortless removal in bottom air-inlet applications

AM9S92 / Single-Stage / Multi-Speed ECM / Up to 92% AFUE

Model	High-Fire Rate (BTU/h)		AFUE %	Tons A/C ¹	Dimensions			Ship Weight (lbs)
	Input	Output			W"	D"	H"	
AM9S920403A*	40,000	36,840	92	3	14"	28 $\frac{3}{8}$ "	34 $\frac{1}{2}$ "	106
AM9S920603B*	60,000	55,260	92	3	17 $\frac{1}{2}$ "	28 $\frac{3}{8}$ "	34 $\frac{1}{2}$ "	114
AM9S920803B*	80,000	73,680	92	3	17 $\frac{1}{2}$ "	28 $\frac{3}{8}$ "	34 $\frac{1}{2}$ "	117
AM9S920804C*	80,000	73,680	92	4	21"	28 $\frac{3}{8}$ "	34 $\frac{1}{2}$ "	139
AM9S920805C*	80,000	73,680	92	5	21"	28 $\frac{3}{8}$ "	34 $\frac{1}{2}$ "	140
AM9S921004C*	100,000	92,100	92	4	21"	28 $\frac{3}{8}$ "	34 $\frac{1}{2}$ "	141
AM9S921005C*	100,000	92,100	92	5	21"	28 $\frac{3}{8}$ "	34 $\frac{1}{2}$ "	142
AM9S921205D*	120,000	110,520	92	5	24 $\frac{1}{2}$ "	28 $\frac{3}{8}$ "	34 $\frac{1}{2}$ "	154

¹ Max tons @ 0.5" ESP

Daikin Comfort Technologies Manufacturing, L.P. reserves the right to discontinue, or change at any time, specifications or designs without notice or without incurring obligations.

Limited Warranty*

* Complete warranty details available from your local dealer or at www.amana-hac.com. To receive the Lifetime Heat Exchanger Limited Warranty (good for as long as you own your home) and 10-Year Parts Limited Warranty, online registration must be completed within 60 days of installation. Online registration is not required in California or Quebec. The duration of warranty coverages in Texas differs in some cases.



Amana brand AM9S92 Single-Stage, Multi-Speed Gas Furnaces provide exceptional indoor comfort and feature a stainless-steel tubular heat exchanger and durable silicon nitride ignition system. This quiet furnace delivers a money-saving efficiency of up to 92% AFUE compared to lower AFUE furnaces.



Standard Features

- Heavy-duty stainless-steel tubular heat exchanger
- Stainless-steel secondary heat exchanger
- Single-stage gas valve
- Durable Silicon Nitride igniter
- Multi-speed ECM blower motor
- Quiet single-speed induced draft blower
- Self-diagnostic control board
- All models comply with California 40 ng/J Low NOx emissions standard
- Can no longer be installed in California's South Coast Air Quality Management District (SCAQMD) on or after October 1, 2019.
- AHRI Certified; ETL Listed

Cabinet Features

- Designed for multi-position installation — AM9S92: upflow, horizontal left or right
- Certified for direct vent (2-pipe) or non-direct vent (1-pipe)
- Easy-to-install top venting with optional side venting — AM9S92: upflow models only
- Convenient left or right connection for gas and electrical service
- Cabinet air leakage (QLeak) ≤ 2%
- Heavy-gauge steel cabinet with durable finish
- Foil-faced insulated heat exchanger cabinet
- Airtight solid bottom or side return with easy-cut tabs for effortless removal in bottom air-inlet applications

AMVC80/ACVC80 / Two-Stage / Variable-Speed / 80% AFUE

Model	High-Fire Rate (BTU/h)		Low-Fire Rate (BTU/h)		AFUE %	Tons A/C ¹	Dimensions			Ship Weight (lbs)
	Input	Output	Input	Output			W"	D"	H"	
AMVC800603B*A	60,000	48,000	42,000	33,600	80	1½-3	17½	28	33¾	105
AMVC800604B*A	60,000	48,000	42,000	33,600	80	1½-4	17½	28	33¾	107
AMVC800803B*A	80,000	64,000	56,000	44,800	80	1½-3	17½	28	33¾	110
AMVC800804C*A	80,000	64,000	56,000	44,800	80	3-4	21	28	33¾	118
AMVC800805C*A	80,000	64,000	56,000	44,800	80	2-5	21	28	33¾	121
AMVC800805D*A	80,000	64,000	56,000	44,800	80	2½-5	24½	28	33¾	129
AMVC801005C*A	100,000	80,000	70,000	56,000	80	2-5	21	28	33¾	124
ACVC800603B*A	60,000	48,000	42,000	33,600	80	1½-3	17½	28	33¾	105
ACVC800803B*A	80,000	64,000	56,000	44,800	80	1½-3	17½	28	33¾	109
ACVC800805C*A	80,000	64,000	56,000	44,800	80	2-5	21	28	33¾	125
ACVC801005C*A	100,000	80,000	70,000	56,000	80	2-5	21	28	33¾	129

¹ BTU/H ² @ 0.1"-0.8" ESP

Daikin Comfort Technologies Manufacturing, L.P. reserves the right to discontinue, or change at any time, specifications or designs without notice or without incurring obligations.

Limited Warranty*

* Complete warranty details available from your local dealer or at www.amana-hac.com. To receive the Lifetime Unit Replacement Limited Warranty (good for as long as you own your home) and 10-Year Parts Limited Warranty, online registration must be completed within 60 days of installation. Online registration is not required in California or Quebec. The duration of warranty coverages in Texas differs in some cases.



Amana brand AMVC80/ACVC80 Two-Stage, Variable-Speed Multi-Position Gas Furnaces provide exceptional indoor comfort, quiet operation, and feature a stainless-steel tubular heat exchanger and durable silicon nitride ignition system. With their two-stage gas valves and variable-speed circulator blowers, these furnaces provide comfort all season long.



Standard Features

- Integrated communicating ComfortBridge™ technology
- Two-stage gas valve provides quiet, economical heating
- Compatibility with the **Amana** brand smart thermostat and other **Amana** brand communicating equipment
- Commissioning and diagnostics via on board Bluetooth with the CoolCloud™ phone and tablet application
- Efficient and quiet variable-speed ECM circulator motor gently ramps up or down according to heating or cooling demand
- SureStart™ Silicon Nitride igniter designed for long igniter life
- Self-diagnostic control board with constant memory fault code history output to a triple 7-segment display
- Low constant fan speed circulates air throughout the home
- Quiet, two-speed induced draft blower
- California Low NO_x emissions-compliant models available

- Can no longer be installed in California's South Coast Air Quality Management District (SCAQMD) on or after October 1, 2019.
- AHRI Certified; ETL Listed

Cabinet Features

- Fully insulated, heavy-gauge steel cabinet with durable baked-enamel finish
- Multi-position installation: AMVC80: upflow, horizontal left or right ACVC80: downflow, horizontal left or right
- Removable bottom for side- or bottom-return applications
- Convenient left or right connection for gas/electric service
- Cabinet air leakage ≤ 2%
- Coil and furnace fit flush for most installations

AM9S80/AC9S80 / Single-Stage / Multi-Speed ECM / 80% AFUE

Model	Heating Fire Rate (BTU/h)		AFUE %	Tons A/C ¹	Dimensions			Ship Weight (lbs)
	Input	Output			W"	D"	H"	
AM9S800403A*	40,000	32,000	80%	3	14	28	33¾	86
AM9S800603A*	60,000	48,000	80%	3	14	28	33¾	90
AM9S800603B*	60,000	48,000	80%	3	17½	28	33¾	100
AM9S800604B*	60,000	48,000	80%	4	17½	28	33¾	108
AM9S800803B*	80,000	64,000	80%	3	17½	28	33¾	116
AM9S800804B*	80,000	64,000	80%	4	17½	28	33¾	120
AM9S800804C*	80,000	64,000	80%	4	21	28	33¾	132
AM9S800805C*	80,000	64,000	80%	5	21	28	33¾	132
AM9S801005C*	100,000	80,000	80%	5	21	28	33¾	132
AM9S801205D*	120,000	96,000	80%	5	24½	28	33¾	132
AC9S800403A*	40,000	32,000	80%	3	14	28	33¾	90
AC9S800603A*	60,000	48,000	80%	3	14	28	33¾	94
AC9S800804B*	60,000	48,000	80%	4	17½	28	33¾	107
AC9S800805C*	80,000	64,000	80%	5	21	28	33¾	115
AC9S801005C*	100,000	80,000	80%	5	21	28	33¾	115

¹ Max tons @ 0.5" ESP

Daikin Comfort Technologies Manufacturing, L.P. reserves the right to discontinue, or change at any time, specifications or designs without notice or without incurring obligations.

Limited Warranty*

* Complete warranty details available from your local dealer or at www.amana-hac.com. To receive the Lifetime Heat Exchanger Limited Warranty (good for as long as you own your home), and 10-Year Parts Limited Warranty, online registration must be completed within 60 days of installation. Online registration is not required in California or Quebec. The duration of warranty coverages in Texas differs in some cases.



Standard Features

- Heavy-duty stainless-steel, dual diameter tubular heat exchanger
- Single-stage gas valve
- Durable Hot-surface igniter
- Quiet, single-speed draft induced
- Self-diagnostic control board
- Color-coded low-voltage terminals
- Multi-speed ECM blower motor
- California Low NOx emissions models available
- Can no longer be installed in California's South Coast Air Quality Management District (SCAQMD) on or after October 1, 2019.
- AHRI Certified; ETL Listed

Cabinet Features

- Installation:
 - AM9S80 - upflow, horizontal left or right
 - AC9S80 - downflow, horizontal left or right
- Convenient left or right connection for gas and electrical service
- Heavy-gauge steel cabinet with durable baked-enamel finish
- Foil faced insulated heat exchanger

AM9S80-U / Ultra Low NOx / Single-Stage / Multi-Speed ECM / 80% AFUE

Model	Heating Fire Rate (BTU/h)		AFUE %	Tons A/C ¹	Dimensions			Ship Weight (lbs)
	Input	Output			W"	D"	H"	
AM9S800403AU*	40,000	32,000	80%	3	14	28	33¾	86
AM9S800603AU*	60,000	48,000	80%	3	14	28	33¾	90
AM9S800604BU*	60,000	48,000	80%	4	17½	28	33¾	100
AM9S800804BU*	80,000	64,000	80%	4	17½	28	33¾	108
AM9S800805CU*	80,000	64,000	80%	5	21	28	33¾	116

¹ Max tons @ 0.5" ESP

Daikin Comfort Technologies Manufacturing, L.P. reserves the right to discontinue, or change at any time, specifications or designs without notice or without incurring obligations.

Limited Warranty*

* Complete warranty details available from your local dealer or at www.amana-hac.com. To receive the Lifetime Heat Exchanger Limited Warranty (good for as long as you own your home), and 10-Year Parts Limited Warranty, online registration must be completed within 60 days of installation. Online registration is not required in California or Quebec. The duration of warranty coverages in Texas differs in some cases.



Amana brand AM9S80-U Single-Stage, Multi-Speed Gas Furnace features a stainless steel heat exchanger and self-diagnostic control board.



Standard Features

- Heavy-duty stainless-steel, dual-diameter tubular heat exchanger
- Compatibility with the **Amana** brand smart thermostat and other **Amana** brand communicating equipment
- Single-stage gas valve
- Durable Hot-surface igniter
- Quiet, modulating draft inducer
- Self-diagnostic control board
- Multi-speed ECM blower motor
- Eligible for installation in California's South Coast Air Quality Management District (SCAQMD) and San Joaquin Valley Air Pollution Control District (SJVUAPCD). This furnace complies with the 14 ng/J NOx emission limit in SCAQMD Rule 1111 and SJVUAPCD Rule 4905.
- AHRI Certified; ETL Listed

Cabinet Features

- Installation: upflow, horizontal left or right
- Convenient left or right connection for gas and electrical service
- Heavy-gauge steel cabinet with durable baked-enamel finish
- Foil faced insulated heat exchanger

AMVS80-U / Ultra Low NOx / Single-Stage / Variable-Speed ECM / 80% AFUE

Model	Heating Fire Rate (BTU/h)		AFUE %	Tons A/C ¹	Dimensions			Ship Weight (lbs)
	Input	Output			W"	D"	H"	
AMVS800604BUA*	60,000	48,000	80	1½ to 4	17½	28	33¾	112
AMVS800805CUA*	80,000	64,000	80	2 to 5	21	28	33¾	127

¹ Max tons @ 0.5" ESP

Daikin Comfort Technologies Manufacturing, L.P. reserves the right to discontinue, or change at any time, specifications or designs without notice or without incurring obligations.

Limited Warranty*

* Complete warranty details available from your local dealer or at www.amana-hac.com. To receive the Lifetime Unit Replacement Limited Warranty, Lifetime Heat Exchanger Limited Warranty (in each case, good for as long as you own your home), and 10-Year Parts Limited Warranty, online registration must be completed within 60 days of installation. Online registration is not required in California or Quebec. The duration of warranty coverages in Texas differs in some cases.



Amana brand AMES80-U Single-Stage, Multi-Speed Gas Furnace features a stainless steel heat exchanger and self-diagnostic control board.



Standard Features

- Integrated communicating ComfortBridge™ Technology
- Compatibility with the **Amana** brand smart thermostat and other **Amana** brand communicating equipment
- Commissioning and diagnostics via indoor board Bluetooth with the CoolCloud™ phone and tablet application
- Heavy-duty stainless-steel, dual-diameter tubular heat exchanger
- Single-stage gas valve
- Durable Hot-surface igniter
- Quiet, modulating draft inducer
- Self-diagnostic control board
- Variable-speed ECM blower motor
- Eligible for installation in California's South Coast Air Quality Management District (SCAQMD) and San Joaquin Valley Air Pollution Control District (SJVUAPCD). This furnace complies with the 14 ng/J NOx emission limit in SCAQMD Rule 1111 and SJVUAPCD Rule 4905.
- EMI line filter kit must be installed. (It is intended for field installation only on "VS" model, Bluetooth® capable Ultra Low NOx Gas Furnaces. The purpose of the EMI Filter is to reduce electromagnetic interference between the furnace and other electrical devices)
- AHRI Certified; ETL Listed

Cabinet Features

- Installation: upflow, horizontal left or right
- Convenient left or right connection for gas and electrical service
- Heavy-gauge steel cabinet with durable baked-enamel finish
- Foil faced insulated heat exchanger

AM9C80/AC9C80 / Two-Stage / 9-Speed ECM / 80% AFUE

Model	High-Fire Rate (BTU/h)		Low-Fire Rate (BTU/h)		AFUE %	Tons A/C ¹	Dimensions			Ship Weight (lbs)
	Input	Output	Input	Output			W"	D"	H"	
AM9C800403AN	40,000	32,000	28,000	22,400	80	3	14	28	33¾	105
AM9C800603B*	60,000	48,000	42,000	33,600	80	3	17½	28	33¾	107
AM9C800803B*	80,000	64,000	56,000	44,800	80	3	17½	28	33¾	118
AM9C800804B*	80,000	64,000	56,000	44,800	80	4	17½	28	33¾	121
AM9C800804C*	80,000	64,000	56,000	44,800	80	4	21	28	33¾	129
AM9C800805C*	80,000	64,000	56,000	44,800	80	5	21	28	33¾	129
AM9C800805DX	80,000	64,000	56,000	44,800	80	5	24½	28	33¾	129
AM9C801005C*	100,000	80,000	70,000	56,000	80	5	21	28	33¾	124
AC9C800403AX	40,000	32,000	28,000	22,400	80	3	14	28	33¾	105
AC9C800603AX	60,000	48,000	42,000	33,600	80	3	14	28	33¾	107
AC9C800603BX	60,000	48,000	42,000	33,600	80	3	17½	28	33¾	107
AC9C800804BX	80,000	64,000	56,000	44,800	80	4	17½	28	33¾	121
AC9C800805CX	80,000	64,000	56,000	44,800	80	5	21	28	33¾	129
AC9C801005CX	100,000	80,000	70,000	56,000	80	5	21	28	33¾	124

¹ BTU/H ² @ 0.1"-0.8" ESP

Daikin Comfort Technologies Manufacturing, L.P. reserves the right to discontinue, or change at any time, specifications or designs without notice or without incurring obligations.

Limited Warranty*

* Complete warranty details available from your local dealer or at www.amana-hac.com. To receive the Lifetime Unit Replacement Limited Warranty (good for as long as you own your home) and 10-Year Parts Limited Warranty, online registration must be completed within 60 days of installation. Online registration is not required in California or Quebec. The duration of warranty coverages in Texas differs in some cases.



Amana brand AM9C80/AC9C80 9-Stage, Variable-Speed Multi-Position Gas Furnaces provide exceptional indoor comfort, quiet operation, and feature a stainless-steel tubular heat exchanger and durable silicon nitride ignition system. With their two-stage gas valves and variable-speed circulator blowers, these furnaces provide comfort all season long.



Standard Features

- Two-stage gas valve provides quiet, economical heating
- Efficient and quiet multi-speed ECM circulator motor
- SureStart® Silicon Nitride igniter designed for long igniter life
- Self-diagnostic control board
- Low constant fan speed circulates air throughout the home
- Quiet, two-speed induced draft blower
- California Low NOx emissions-compliant models available
- Can no longer be installed in California's South Coast Air Quality Management District (SCAQMD) on or after October 1, 2019.
- AHRI Certified; ETL Listed

Cabinet Features

- Fully insulated, heavy-gauge steel cabinet with durable baked-enamel finish
- Multi-position installation: AM9C80: upflow, horizontal left or right AC9C80: downflow, horizontal left or right
- Removable bottom for side- or bottom-return applications
- Convenient left or right connection for gas/electric service
- Cabinet air leakage ≤ 2%
- Coil and furnace fit flush for most installations

AIR HANDLERS AND EVAPORATOR COILS



AHVE / Variable-Speed / Communicating For S-Series matchups / Multi-Position

Model	Cooling (Tons)	Voltage-Phase	Dimensions			Refrigerant Line		Ship Weight (lbs)
			W"	D"	H"	Liquid"	Suction"	
AHVE24BP1400	2	208/230-1	17½	21	45	¾"	¾"	115
AHVE36CP1400	3	208/230-1	21	21	53⅞	¾"	7/8"	140
AHVE42CP1400	3½	208/230-1	21	21	53⅞	¾"	7/8"	140
AHVE48DP1400	4	208/230-1	24½	21	53⅞	¾"	7/8"	150
AHVE60DP1400	5	208/230-1	24½	21	58	¾"	7/8"	167

Daikin Comfort Technologies Manufacturing, L.P. reserves the right to discontinue, or change at any time, specifications or designs without notice or without incurring obligations.

Limited Warranty*

* Complete warranty details available from your local dealer or at www.amana-hac.com. To receive the 10-Year Parts Limited Warranty, online registration must be completed within 60 days of installation. Online registration is not required in California or Quebec. The duration of warranty coverages in Texas differs in some cases.



Standard Features

- Electronic Expansion Valve (EEV) for cooling and heat pump applications.
- 7mm evaporator coil tube size
- Variable-speed ECM blower motor
- Compatible with **Amana**® brand smart thermostat
- Exclusive compatibility with the **Amana** brand S-series outdoors AC & HP
- Provides constant CFM over a wide range of static pressure conditions independent of duct system
- CFM indicator
- Thermostat provides adjustable low CFM for efficient fan-only operation
- All-aluminum evaporator coil
- Fault recall of six most recent faults
- Improved humidity and comfort control
- AHRI certified; ETL listed
- Coil mounting track for quick repositioning
- Rigid SmartFrame™ cabinet

Cabinet Features

- Cabinet air leakage less than 2.0% at 1.0 inch H₂O when tested in accordance with ASHRAE standard 193
- Cabinet air leakage less than 1.4% at 0.5 inch H₂O when tested in accordance with ASHRAE standard 193
- Horizontal or vertical configuration capabilities
- 21" depth for easier attic access
- DecaBDE-free thermoplastic drain pan with secondary drain connections
- Screw-less sides and back helps to reduce condensation when installed in humid locations
- Foil-faced insulation covers the internal casing to reduce cabinet condensation
- Galvanized, leather grain-embossed finish
- Glue-less cabinet insulation retention
- Tool-less filter access

The **Amana** brand AHVE Multi-Position, Variable-Speed Air Handler is ECM-Based Air Handler with Internal EEV. This unit's ECM blower motor allows for a soft start and stop for quiet operation and helps reduce the cold blast of air upon heating start-up.



AMVE / Variable-Speed / ComfortBridge™ Controller-Compatible / Multi-Position

Model	Cooling (Tons)	Voltage-Phase	Dimensions			Service Valve		Ship Weight (lbs)
			W"	D"	H"	Liquid"	Suction"	
AMVE24BP1400	24,000	208/230	17½	21	53 ⁷ / ₁₆	¾"	¾"	115
AMVE36CP1400	36,000	208/230	21	21	53 ⁷ / ₁₆	¾"	7/8"	140
AMVE48DP1400	48,000	208/230	24½	21	53 ⁷ / ₁₆	¾"	7/8"	150
AMVE60DP1400	60,000	208/230	24½	21	58	¾"	7/8"	167

Daikin Comfort Technologies Manufacturing, L.P. reserves the right to discontinue, or change at any time, specifications or designs without notice or without incurring obligations.

Limited Warranty*

* Complete warranty details available from your local dealer or at www.amana-hac.com. To receive the 10-Year Parts Limited Warranty, online registration must be completed within 60 days of installation. Online registration is not required in California or Quebec. The duration of warranty coverages in Texas differs in some cases.



The Amana brand AMVE Multi-Position, Variable-Speed Air Handler features the SmartFrame™ cabinet with a 21" depth for easy attic access and includes a direct-drive, multi-speed motor for air-volume variation. The AMVE may be installed in a variety of locations.



Standard Features

- Electronic Expansion Valve (EEV) for cooling and heat pump applications
- Variable-speed ECM blower motor
- Suitable for operation with inverter-driven products
- Compatible with Amana® brand smart thermostat
- Integrated communicating ComfortBridge™ Technology
- Commissioning and diagnostics via on board Bluetooth with the CoolCloud™ phone and tablet application
- Constant CFM over a wide range of static pressure conditions independent of duct system
- CFM indicator
- All-aluminum evaporator coil
- Fault recall of six most recent faults
- Improved humidity and comfort control
- 3 kW–25 kW electric heater kits
- AHRI certified; ETL listed

Cabinet Features

- Cabinet air leakage less than 2.0% at 1.0 inch H₂O when tested in accordance with ASHRAE standard 193
- Cabinet air leakage less than 1.4% at 0.5 inch H₂O when tested in accordance with ASHRAE standard 193
- Horizontal or vertical configuration capabilities
- 21" depth for easier attic access
- DecaBDE-free thermoplastic drain pan with secondary drain connections
- Screw-less sides and back helps to reduce condensation when installed in humid locations
- Foil-faced insulation covers the internal casing to reduce cabinet condensation
- Galvanized, leather grain-embossed finish
- Glue-less cabinet insulation retention
- Tool-less filter access

AMVT / Variable-Speed / ComfortBridge™ Controller-Compatible / Multi-Position

Model	Cooling (Tons)	Voltage-Phase	Dimensions			Service Valve		Ship Weight (lbs)
			W"	D"	H"	Liquid"	Suction"	
AMVT24BP1400	1½	208/230-1	17½	21	45	¾"	¾"	129
AMVT30BP1400	2	208/230-1	17½	21	53 1/2	¾"	7/8"	129
AMVT36BP1400	2½	208/230-1	17½	21	49	¾"	7/8"	129
AMVT36CP1400	3	208/230-1	21	21	45	¾"	¾"	153
AMVT42CP1400	3½	208/230-1	21	21	53 1/2	¾"	7/8"	153
AMVT48CP1400	4	208/230-1	21	21	53 1/2	¾"	7/8"	153
AMVT48DP1400	4	208/230-1	24½	21	49	¾"	7/8"	155
AMVT60DP1400	5	208/230-1	24½	21	53 1/2	¾"	7/8"	167

Daikin Comfort Technologies Manufacturing, L.P. reserves the right to discontinue, or change at any time, specifications or designs without notice or without incurring obligations.

Limited Warranty*

* Complete warranty details available from your local dealer or at www.amana-hac.com. To receive the 10-Year Parts Limited Warranty, online registration must be completed within 60 days of installation. Online registration is not required in California or Quebec. The duration of warranty coverages in Texas differs in some cases.



Standard Features

- Internal factory-installed thermal expansion valves for cooling and heat pump applications
- Variable-speed ECM blower motor
- Integrated communicating ComfortBridge™ Technology
- Commissioning and diagnostics via on board Bluetooth with the CoolCloud™ phone and tablet application
- Auto configuration of the airflow and tonnage in communicating mode
- Provides constant CFM over a wide range of static pressure conditions independent of duct system
- CFM indicator
- Fault recall of six most recent faults
- Provides adjustable low CFM for efficient fan-only operation
- Improved humidity and comfort control
- Built-in compatibility with multi-stage heat pump and cooling applications
- All-aluminum evaporator coil
- AHRI certified; ETL listed

Cabinet Features

- Rigid SmartFrame™ cabinet
- Cabinet air leakage less than 2.0% at 1.0 inch H₂O when tested in accordance with ASHRAE standard 193
- Cabinet air leakage less than 1.4% at 0.5 inch H₂O when tested in accordance with ASHRAE standard 193
- Horizontal or vertical configuration capabilities
- 21" depth for easier attic access
- DecaBDE-free thermoplastic drain pan with secondary drain connections
- Screw-less sides and back helps to reduce condensation when installed in humid locations
- Foil-faced insulation covers the internal casing to reduce cabinet condensation
- Galvanized, leather grain-embossed finish
- Glue-less cabinet insulation retention
- Tool-less filter access
- Field Installed 3 kW – 25 kW electric heater kits available

The Amana brand AMVT Multi-Position, Variable-Speed Air Handler is optimized for use with the chlorine-free refrigerant, R-410A. This unit's ECM blower motor allows for a soft start and stop for quiet operation and helps reduce the cold blast of air upon heating start-up.



AMST / Multi-Speed / Multi-Position

Model	Cooling (Tons)	Voltage-Phase	Dimensions			Service Valve		Ship Weight (lbs)
			W"	D"	H"	Liquid"	Suction"	
AMST24BU1400**	1½	208/230-1	17½	21	45	¾"	¾"	112
AMST30BU1400**	2	208/230-1	17½	21	53 1/2	¾"	¾"	129
AMST36BU1400**	2½	208/230-1	17½	21	49	¾"	¾"	129
AMST36CU1400**	3	208/230-1	21	21	45	¾"	¾"	153
AMST42CU1400**	3½	208/230-1	21	21	53 1/2	¾"	7/8"	153
AMST48CU1400**	4	208/230-1	21	21	53 1/2	¾"	7/8"	153
AMST48DU1400**	4	208/230-1	24½	21	49	¾"	7/8"	155
AMST60DU1400**	5	208/230-1	24½	21	53 1/2	¾"	7/8"	167

Daikin Comfort Technologies Manufacturing, L.P. reserves the right to discontinue, or change at any time, specifications or designs without notice or without incurring obligations.

Limited Warranty*

* Complete warranty details available from your local dealer or at www.amana-hac.com. To receive the 10-Year Parts Limited Warranty, online registration must be completed within 60 days of installation. Online registration is not required in California or Quebec. The duration of warranty coverages in Texas differs in some cases.



The Amana brand AMST Multi-Position, Multi-Speed Air Handler features the SmartFrame™ cabinet with a 21" depth for easy attic access. The AMST may be installed in a variety of locations.



Standard Features

- Internal factory-installed thermal expansion valves for cooling and heat pump applications
- Direct drive, multi-speed ECM blower motor
- All-aluminum evaporator coil
- Coil mounting track for quick repositioning
- Optimized for use with R-410A refrigerant
- Cabinet air leakage less than 2.0% at 1.0 inch H₂O when tested in accordance with ASHRAE standard 193
- Cabinet air leakage less than 1.4% at 0.5 inch H₂O when tested in accordance with ASHRAE standard 193
- AHRI certified; ETL listed

Cabinet Features

- Rigid SmartFrame™ cabinet
- Horizontal or vertical configuration capabilities
- 21" depth for easier attic access
- DecaBDE-free thermoplastic drain pan with secondary drain connections
- Screw-less sides and back helps to reduce condensation when installed in humid locations
- Foil-faced insulation covers the internal casing to reduce cabinet condensation
- Galvanized, leather grain-embossed finish
- Glue-less cabinet insulation retention
- Tool-less filter access
- Field Installed 3 kW – 25 kW electric heater kits available

MBVC / Multi-Position / Variable-Speed ECM-Based Modular Blower

Model	Voltage	Dimensions			Ship Weight (lbs)
		W"	D"	H"	
MBVC1201AA-1	208/230-1	17½	21	26	67
MBVC1601AA-1	208/230-1	21	21	30	80
MBVC2001AA-1	208/230-1	24½	21	30	86

Daikin Comfort Technologies Manufacturing, L.P. reserves the right to discontinue, or change at any time, specifications or designs without notice or without incurring obligations.

Limited Warranty*

* Complete warranty details available from your local dealer or at www.amana-hac.com. To receive the 10-Year Parts Limited Warranty, online registration must be completed within 60 days of installation. Online registration is not required in California or Quebec. The duration of warranty coverages in Texas differs in some cases.



The **Amana** brand MBVC modular blowers are tailor-made for exceptional energy efficiency. MBVC modules are fully communicating with ComfortBridge™ technology compatibility and the MBVC's ECM blower motor assemblies increase both installation and application flexibility. MBVC's can be matched with cased coils for upflow, downflow, and horizontal applications.



Standard Features

- Variable-speed ECM blower motor
- Integrated communicating ComfortBridge™ Technology
- Compatible with Amana® brand smart thermostat
- Commissioning and diagnostics via on board Bluetooth with the CoolCloud™ phone and tablet application
- Advanced configuration of the airflow and tonnage in communicating mode
- Provides constant CFM over a wide range of static pressure conditions independent of duct system
- CFM indicator
- Fault recall of six most recent faults
- Provides adjustable low CFM for efficient fan-only operation
- Improved humidity and comfort control
- Built-in compatibility with multi-stage heat pump and cooling applications
- 3 kW–20 kW electric heat kits available

- Blower section usable as electric heater

Cabinet Features

- Horizontal or vertical configuration capabilities
- 21" depth for easier attic access
- Foil-faced insulation covers the internal casing to reduce cabinet condensation
- Galvanized, leather grain-embossed finish
- Cabinet air leakage less than 2% at 1.0 inch H₂O when tested in accordance with ASHRE standard 193
- Cabinet air leakage less than 1.4% at 0.5 inch H₂O when tested in accordance with ASHRE standard 193
- AHRI certified; ETL listed

AWST / Wall-Mount

Model	Cooling (Tons)	Electric Heat (kW)	Voltage	Dimensions			Service Valve		Ship Weight (lbs)
				W"	D"	H"	Liquid"	Suction"	
AWST18SU1403	1½	3	208/230-1	20.2	16.125	36	¾"	⅝"	84
AWST18SU1405	1½	5	208/230-1	20.2	16.125	36	¾"	⅝"	84
AWST18SU1408	1½	8	208/230-1	20.2	16.125	36	¾"	⅝"	84
AWST24SU1405	2	5	208/230-1	20.2	16.125	36	¾"	⅝"	84
AWST24SU1408	2	8	208/230-1	20.2	16.125	36	¾"	⅝"	84
AWST24SU1410	2	10	208/230-1	20.2	16.125	36	¾"	⅝"	84
AWST30LU1405	2½	5	208/230-1	24	21	36	¾"	¾"	109
AWST30LU1408	2½	8	208/230-1	24	21	36	¾"	¾"	109
AWST30LU1410	2½	10	208/230-1	24	21	36	¾"	¾"	109
AWST36LU1405	3	5	208/230-1	24	21	36	¾"	¾"	109
AWST36LU1408	3	8	208/230-1	24	21	36	¾"	¾"	109
AWST36LU1410	3	10	208/230-1	24	21	36	¾"	¾"	109

Daikin Comfort Technologies Manufacturing, L.P. reserves the right to discontinue, or change at any time, specifications or designs without notice or without incurring obligations.

Limited Warranty*

* Complete warranty details available from your local dealer or at www.amana-hac.com. To receive the 10-Year Parts Limited Warranty, online registration must be completed within 60 days of installation. Online registration is not required in California or Quebec. The duration of warranty coverages in Texas differs in some cases.



The Amana brand AWST Air Handler is designed to be vertically wall- or stud-mounted. This unit features a check flowrator and direct-drive, multi-speed motor. The AWST is housed in a fully insulated, galvanized-steel cabinet.



Standard Features

- AWST Models: Equipped with a fully adjustable TXV
- Direct-drive, multi-speed motors allows air volume variation for heating/cooling
- Sequence-controlled, rust-resistant nickel chromium heating elements of 3, 5, 8, and 10 kW
- Aluminum tubing coils on all models
- Cabinet air leakage less than 2.0% at 1.0 inch H₂O when tested in accordance with ASHRAE standard 193

Cabinet Features

- Cabinet air leakage less than 1.4% at 0.5 inch H₂O when tested in accordance with ASHRAE standard 193
- Factory-installed pull-type disconnect
- Thermoplastic drain pan with bottom primary and secondary drain connections
- Built-in filter rack (filter included)
- Large chassis (2½- and 3-ton units) – front return only
- Small chassis (1½- and 2-ton units) – front or bottom return
- Wall-hanging bracket provided
- AHRI Certified; ETL Listed

AWSF / Wall-Mount

Model	Cooling (Tons)	Electric Heat (kW)	Voltage	Dimensions			Service Valve		Ship Weight (lbs)
				W"	D"	H"	Liquid"	Suction"	
AWSF18SU1605	1½	5	208/230	20 ³ / ₁₆	16 ⁷ / ₈	36	¾	5/8	84
AWSF18SU1608	1½	8	208/230	20 ³ / ₁₆	16 ⁷ / ₈	36	¾	5/8	84
AWSF24SU1605	2	5	208/230	20 ³ / ₁₆	16 ⁷ / ₈	36	¾	5/8	84
AWSF24SU1608	2	8	208/230	20 ³ / ₁₆	16 ⁷ / ₈	36	¾	5/8	84
AWSF24SU1610	2	10	208/230	20 ³ / ₁₆	16 ⁷ / ₈	36	¾	5/8	84
AWSF30LU1605	2½	5	208/230	24	21	36	¾	¾	109
AWSF30LU1608	2½	8	208/230	24	21	36	¾	¾	109
AWSF30LU1610	2½	10	208/230	24	21	36	¾	¾	109
AWSF36LU1605	3	5	208/230	24	21	36	¾	¾	109
AWSF36LU1608	3	8	208/230	24	21	36	¾	¾	109
AWSF36LU1610	3	10	208/230	24	21	36	¾	¾	109

Daikin Comfort Technologies Manufacturing, L.P. reserves the right to discontinue, or change at any time, specifications or designs without notice or without incurring obligations.

Limited Warranty*

* Complete warranty details available from your local dealer or at www.amana-hac.com. To receive the 10-Year Parts Limited Warranty, online registration must be completed within 60 days of installation. Online registration is not required in California or Quebec. The duration of warranty coverages in Texas differs in some cases.



The Amana brand AWSF Air Handler is designed to be vertically wall- or stud-mounted. This unit features a check flowrator and direct-drive, multi-speed motor. The AWSF is housed in a fully insulated, galvanized-steel cabinet.



Standard Features

- AWSF Models: Equipped with a Check Flowrator
- Direct-drive, multi-speed motors allows air volume variation for heating/cooling
- Sequence-controlled, rust-resistant nickel chromium heating elements of 5, 8, and 10 kW
- Aluminum tubing coils on all models
- Cabinet air leakage less than 2.0% at 1.0 inch H₂O when tested in accordance with ASHRAE standard 193

Cabinet Features

- Cabinet air leakage less than 1.4% at 0.5 inch H₂O when tested in accordance with ASHRAE standard 193
- Factory-installed pull-type disconnect
- Thermoplastic drain pan with bottom primary and secondary drain connections
- Built-in filter rack (filter included)
- Large chassis (2½- and 3-ton units) – front return only
- Small chassis (1½- and 2-ton units) – front or bottom return
- Wall-hanging bracket provided
- AHRI Certified; ETL Listed

ACSF / Ceiling-Mounted

Model	Cooling Capacity (tons)	Electric Heat (kW)	Voltage (VAC)	Dimensions			Service Valve		Ship Weight (lbs)
				W"	D"	H"	Liquid"	Suction"	
ACSF18MN1605AA	1½	5	208/230	43¼	21	10	¾	¾	69
ACSF18MN1608AA	1½	8	208/230	43¼	21	10	¾	¾	69
ACSF24LN1605AA	2	5	208/230	49¼	21	10	¾	¾	79
ACSF24LN1606AA	2	6	208/230	49¼	21	10	¾	¾	79
ACSF24LN1608AA	2	8	208/230	49¼	21	10	¾	¾	79
ACSF24LN1610AA	2	10	208/230	49¼	21	10	¾	¾	79
ACSF30LN1605AA	2½	5	208/230	49¼	21	10	¾	¾	79
ACSF30LN1606AA	2½	6	208/230	49¼	21	10	¾	¾	79
ACSF30LN1608AA	2½	8	208/230	49¼	21	10	¾	¾	79
ACSF30LN1610AA	2½	10	208/230	49¼	21	10	¾	¾	79

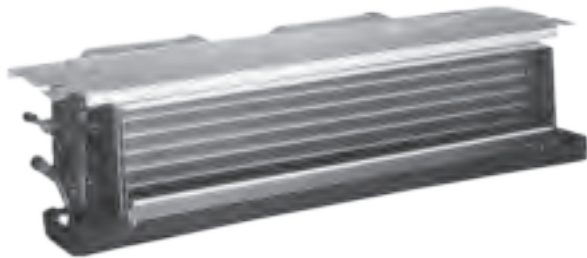
Daikin Comfort Technologies Manufacturing, L.P. reserves the right to discontinue, or change at any time, specifications or designs without notice or without incurring obligations.

Limited Warranty*

* Complete warranty details available from your local dealer or at www.amana-hac.com. To receive the 10-Year Parts Limited Warranty, online registration must be completed within 60 days of installation. Online registration is not required in California or Quebec. The duration of warranty coverages in Texas differs in some cases.



The Amana brand ACSF Electric Heat Air Handler is designed to be ceiling-mounted. This unit features a check flowrator and direct-drive, resilient-mount, multi-speed motor. The ACSF has galvanized-steel construction and quiet operation.



Standard Features

- All-Aluminum tube/aluminum fin coil
- Direct-drive, resilient-mount, multi-speed motor
- Available without heat or with sequence-controlled and rust-resistant nickel chromium heating elements of 5, 6, 8 or 10 kW
- High-efficiency evaporator coil
- Quiet operation

Cabinet Features

- AHRI Certified; ETL Listed
- Primary/secondary drain connection in a high-temperature plastic drain pan
- Suitable for free-return installation (non-ducted return air)
- Galvanized-steel construction
- Factory-installed pull-type disconnect
- Easy service access

CAPEA / CAPE & CHPE / Cased Indoor Coil

CAPEA - Utilized by ASXS6 & ASZS6

Model	Dimensions			Nominal Capacity Range (tons)	Connection Size		Ship Weight (lbs)
	W"	D"	H"		Liquid"	Suction"	
CAPEA1818B4	17½	21⅝	18	1½ - 2	¾	¾	43
CAPEA1818C4	21	21⅝	18	1½ - 2	¾	¾	45
CAPEA2422B4	17½	21⅝	22	2 - 2½	¾	¾	48
CAPEA2422C4	21	21⅝	22	2 - 2½	¾	¾	51
CAPEA3026B4	17½	21⅝	26	3	¾	7⁄8	54
CAPEA3026C4	21	21⅝	26	3	¾	7⁄8	57
CAPEA3026D4	24½	21⅝	26	3	¾	7⁄8	62

The manufacturing entity reserves the right to discontinue, or change at any time, specifications or designs without notice or without incurring obligations.

CAPE - Utilized by ASXS6 only

Model	Dimensions			Nominal Capacity Range (tons)	Connection Size		Ship Weight (lbs)
	W"	D"	H"		Liquid"	Suction"	
CAPE4860C4	21	21⅝	30	3½ - 4	¾	7⁄8	71
CAPE4860D4	24½	21⅝	30	3½ - 4	¾	7⁄8	73
CAPE4961C4	21	21⅝	30	4 - 5	¾	7⁄8	78
CAPE4961D4	24½	21⅝	30	4 - 5	¾	7⁄8	80

The manufacturing entity reserves the right to discontinue, or change at any time, specifications or designs without notice or without incurring obligations.

CHPE - Utilized by ASXS6 only

Model	Cabinet Dimensions			Nominal Capacity Range (tons)	Connection Size		Ship Weight (lbs)
	W"	D"	H"		Liquid"	Suction"	
CHPE2430B4	21⅝	26	17½	1½	¾	¾	56
CHPE3636B4	21⅝	26	17½	2 - 3	¾	¾	59
CHPE3642C4	21⅝	26	21	2 - 3	¾	¾	62
CHPE3743C4	21⅝	26	21	3 - 4	¾	7⁄8	68
CHPE3743D4	21⅝	26	24½	3 - 3½	¾	7⁄8	72
CHPE4860D4	21⅝	26	24½	4 - 5	¾	7⁄8	79

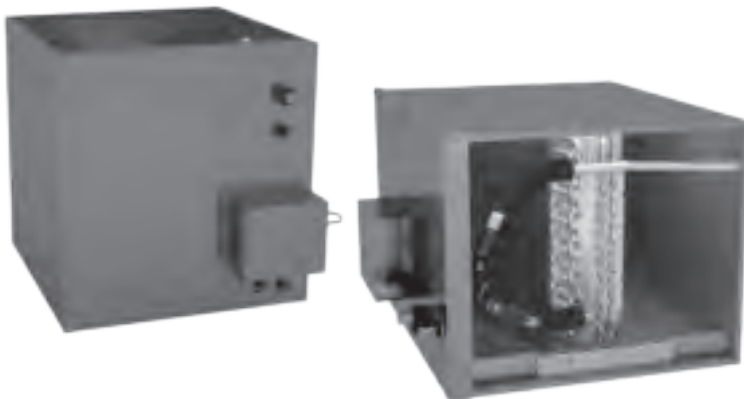
The manufacturing entity reserves the right to discontinue, or change at any time, specifications or designs without notice or without incurring obligations.

Limited Warranty*

* Complete warranty details available from your local dealer or at www.amana-hac.com. To receive the 10-Year Parts Limited Warranty, online registration must be completed within 60 days of installation. Online registration is not required in California or Quebec. The duration of warranty coverages in Texas differs in some cases.



The Amana brand All-aluminum CAPE/A and CHPE Cased Upflow/Downflow and Horizontal Coils are made for the Amana S-series system. This unit features aluminum tubing and corrugated aluminum fin coils and rust-resistant, high-temperature, thermoplastic drain pans.



Standard Features

- Available in 1.5-Ton through 5-Ton capacities
- Engineered for compatibility with Amana brand S-series AC units
- Compatible with Amana S-series air conditioner and heat pump models
- Electronic Expansion Valve (EEV) models feature
- Compatibility with the Amana brand smart thermostat and other Amana brand communicating equipment
- Cooling and heat pump applications
- Fault recall of six most recent faults
- PID control loop for precision capacity control
- Seamless integration to full suite of Amana brand controls using communicating control board
- Air cleaner and humidifier integration capable (rules apply, refer to installation manual for details).
- UV and rust resistant, 5VA rated thermoplastic drain pan with integrated secondary drain
- Foil-faced insulation covers internal casing to reduce cabinet condensation
- Split seam front for easy installation and service access (except for CAPEA)
- Light weight all aluminum evaporator coil with AlumaFin7™ technology (CAPEA)
- Ships factory standard up flow with easy field conversion to downflow (CAPEA & CAPE)
- CHPE is for horizontal applications
- AHRI certified; ETL listed

CAPTA / Cased Indoor "A" / Upflow and Downflow

Model	Dimensions			Nominal Tons	Connection		Ship Weight (lbs)
	W"	D"	H"		Liquid"	Suction"	
CAPTA1818A4	14"	21"	18"	1½	¾	¾	36
CAPTA1818B4	17.5"	21"	18"	1½	¾	¾	41
CAPTA2422A4	14"	21"	22"	2	¾	¾	44
CAPTA2422B4	17.5"	21"	22"	2	¾	¾	48
CAPTA2422C4	21"	21"	22"	2	¾	¾	53
CAPTA3022A4	14"	21"	22"	2½	¾	¾	44
CAPTA3022B4	17.5"	21"	22"	2½	¾	¾	48
CAPTA3022C4	21"	21"	22"	2½	¾	¾	53
CAPTA3026B4	17.5"	21"	26"	2½	¾	7/8	50
CAPTA3026C4	21"	21"	26"	2½	¾	7/8	52
CAPTA3626B4	17.5"	21"	26"	3	¾	7/8	54
CAPTA3626C4	21"	21"	26"	3	¾	7/8	57
CAPTA4230C4	21"	21"	30"	3½	¾	7/8	63
CAPTA4230D4	24.5"	21"	30"	3½	¾	7/8	66

Daikin Comfort Technologies Manufacturing, L.P. reserves the right to discontinue, or change at any time, specifications or designs without notice or without incurring obligations.

Limited Warranty*

* Complete warranty details available from your local dealer or at www.amana-hac.com. To receive the 10-Year Parts Limited Warranty, online registration must be completed within 60 days of installation. Online registration is not required in California or Quebec. The duration of warranty covers in Texas differs in some cases.



The Amana brand All-aluminum CAPTA Cased Upflow/Downflow Indoor Coils are made for split system air conditioners and heat pumps. This unit features aluminum tubing and corrugated aluminum fin coils and rust-resistant, high-temperature, thermoplastic drain pans. The CAPTA cabinet is painted architectural gray.



Standard Features

- All-Aluminum evaporator coil
- Optimized for use with R-410A refrigerant
- CAPTA models feature factory-installed thermal expansion valves for cooling and heat pump applications
- Check flowrator for cooling and heat pump applications
- AHRI certified; ETL listed

Cabinet Features

- 21" depth for easier attic access
- Single front access panel
- Foil-faced insulation covers the internal casing to reduce cabinet condensation
- Galvanized, leather grain-embossed finish
- Rust resistant, thermoplastic drain pans featuring a low water-retention design
- DecaBDE-free thermoplastic drain pan with secondary drain connections
- UV-resistant drain pan

CAPT / Cased Indoor "A" / Internal TXV / Upflow and Downflow

Model	Cabinet Dimensions			Nominal Tons	Connection		Ship Weight (lbs)
	W"	D"	H"		Liquid"	Suction"	
CAPT4961C4*	21	21	30	4-5	3/8	7/8	73
CAPT4961D4*	24½	21	30	4-5	3/8	7/8	76

Daikin Comfort Technologies Manufacturing, L.P. reserves the right to discontinue, or change at any time, specifications or designs without notice or without incurring obligations.

Limited Warranty*

* Complete warranty details available from your local dealer or at www.amana-hac.com. To receive the 10-Year Parts Limited Warranty, online registration must be completed within 60 days of installation. Online registration is not required in California or Quebec. The duration of warranty coverages in Texas differs in some cases.



The Amana brand All-aluminum CAPT Cased coils with a factory-installed TXV is made for split system air conditioners and heat pumps. This unit features aluminum tubing and corrugated aluminum fin coils and rust-resistant, high-temperature, thermoplastic drain pans. The CAPT cabinet is painted architectural gray.



Standard Features

- All-Aluminum evaporator coil
- Optimized for use with R-410A refrigerant
- CAPT models feature factory-installed thermal expansion valves for cooling and heat pump applications
- Check flowrator for cooling and heat pump applications
- AHRI certified; ETL listed

Cabinet Features

- 21" depth for easier attic access
- Split seam front for easy access
- Foil-faced insulation covers the internal casing to reduce cabinet condensation
- Galvanized, leather grain-embossed finish
- Rust resistant, thermoplastic drain pans featuring a low water-retention design
- DecaBDE-free thermoplastic drain pan with secondary drain connections
- UV-resistant drain pan

CAPF / Cased Indoor "A" / Upflow and Downflow

Model	Dimensions			Nominal Tons	Connection		Ship Weight (lbs)
	W"	D"	H"		Liquid"	Suction"	
CAPF3137B6*	17½	21	22	2½	¾	¾	46
CAPF3743C6*	21	21	30	3-3½	¾	7/8	63
CAPF3743D6*	24½	21	30	3-3½	¾	7/8	75
CAPF4860C6*	21	21	30	4-5	¾	7/8	65
CAPF4860D6*	24½	21	30	4-5	¾	7/8	68
CAPF4961C6*	21	21	30	4-5	¾	7/8	73
CAPF4961D6*	24½	21	30	4-5	¾	7/8	76

Daikin Comfort Technologies Manufacturing, L.P. reserves the right to discontinue, or change at any time, specifications or designs without notice or without incurring obligations.

Limited Warranty*

* Complete warranty details available from your local dealer or at www.amana-hac.com. To receive the 10-Year Parts Limited Warranty, online registration must be completed within 60 days of installation. Online registration is not required in California or Quebec. The duration of warranty coverages in Texas differs in some cases.



The Amana brand All-aluminum CAPF Cased Upflow/Downflow Indoor Coils are made for split system air conditioners and heat pumps. This unit features aluminum tubing and corrugated aluminum fin coils and rust-resistant, high-temperature, thermoplastic drain pans. The CAPF cabinet is painted architectural gray.



Standard Features

- All-Aluminum evaporator coil
- Optimized for use with R-410A refrigerant
- Some models suitable for use with R-410A or R-22 refrigerant
- Check flowrator for cooling and heat pump applications
- AHRI certified; ETL listed

Cabinet Features

- 21" depth for easier attic access
- Split seam front for easy access
- Foil-faced insulation covers the internal casing to reduce cabinet condensation
- Galvanized, leather grain-embossed finish
- Rust resistant, thermoplastic drain pans featuring a low water-retention design
- DecaBDE-free thermoplastic drain pan with secondary drain connections
- UV-resistant drain pan

CAPFA / Cased Indoor "A" / Upflow and Downflow

Model	Dimensions			Nominal Tons	Connection		Ship Weight (lbs)
	W"	D"	H"		Liquid"	Suction"	
CAPFA1818A6	14	21	18	1½	¾	¾	33
CAPFA1818B6	17½	21	18	1½	¾	¾	38
CAPFA1818C6	21	21	18	1½	¾	¾	43
CAPFA2418A6	14	21	18	2	¾	¾	33
CAPFA2418B6	17½	21	18	2	¾	¾	38
CAPFA2418C6	21	21	18	2	¾	¾	43
CAPFA2422A6	14	21	22	2	¾	¾	41
CAPFA2422B6	17½	21	22	2	¾	¾	45
CAPFA2422C6	21	21	22	2	¾	¾	50
CAPFA3022A6	14	21	22	2½	¾"	¾"	41
CAPFA3022B6	17½	21	22	2½	¾	¾	45
CAPFA3022C6	21	21	22	2½	¾	¾	50
CAPFA3022D6	24½	21	22	2½	¾	¾	52
CAPFA3626B6	17½	21	26	3	¾	7/8	47
CAPFA3626C6	21	21	26	3	¾	7/8	49
CAPFA3626D6	24½	21	26	3	¾	7/8	56
CAPFA4226B6	17½	21	26	3½	¾	7/8	56
CAPFA4226C6	21	21	26	3½	¾	7/8	56
CAPFA4226D6	24½	21	26	3½	¾	7/8	56

Daikin Comfort Technologies Manufacturing, L.P. reserves the right to discontinue, or change at any time, specifications or designs without notice or without incurring obligations.

Limited Warranty*

* Complete warranty details available from your local dealer or at www.amana-hac.com. To receive the 10-Year Parts Limited Warranty, online registration must be completed within 60 days of installation. Online registration is not required in California or Quebec. The duration of warranty coverages in Texas differs in some cases.



AlumaFin7
Evaporator Coil

The Amana brand All-aluminum CAPF Cased Upflow/Downflow Indoor Coils are made for split system air conditioners and heat pumps. This unit features aluminum tubing and corrugated aluminum fin coils and rust-resistant, high-temperature, thermoplastic drain pans. The CAPF cabinet is painted architectural gray.



Standard Features

- Compact and lightweight all-aluminum evaporator coil with AlumaFin7™ technology
- Optimized for use with R-410A refrigerant
- 7mm tubes designed with patented grooves to maximize heat transfer
- Hydrophilic fins provide superior condensate management
- Check flowrator for cooling and heat pump applications
- Flowrator mounts on access panel for easier servicing
- UV and mold resistant thermoplastic condensate drain pans featuring a 'no water-retention' design

- DecaBDE-free thermoplastic drain pan with secondary drain connections
- AHRI certified
- ETL Listed

Cabinet Features

- 21-inch depth for easy access in tight installations
- Foil-faced insulation covers the internal casing to reduce cabinet condensation
- Single-piece access panel with tight seal helps to keep conditioned air from escaping
- Galvanized, leather grain-embossed finish
- Seal tight customized suction and liquid grommets for easy installation and removal

CAUF / Uncased Indoor "A" / Upflow

Model	Nominal Tons	Dimensions			Connection		Piston Size	Ship Weight (lbs)
		W"	D"	H"	Liquid"	Suction"		
CAUF1824A6*	1½-2	13	20⅞	16¼	¾	¾	.059	18
CAUF1824B6*	1½-2	16½	20⅞	16⅞	¾	¾	.059	23
CAUF1824C6*	1½-2	20	20⅞	16¾	¾	¾	.059	27
CAUF3030A6*	2½	13	20⅞	20⅛	¾	¾	.065	25
CAUF3030B6*	2½	16½	20⅞	18¾	¾	¾	.065	22
CAUF3030C6*	2½	20	20⅞	17⅞	¾	¾	.065	25
CAUF3030D6*	2½	23	20⅞	17⅞	¾	¾	.065	32
CAUF3131B6*	2½	16½	20⅞	20⅛	¾	¾	.068	27
CAUF3137B6*	2½-3	16½	20⅞	27	¾	¾	.071	53
CAUF3131C6*	2½	20	20⅞	20	¾	¾	.068	31
CAUF3636A6*	3	13	20⅞	19½	¾	¾	.071	30
CAUF3636B6*	3	16½	20⅞	19¾	¾	¾	.071	25
CAUF3636C6*	3	20	20⅞	19⅞	¾	¾	.071	28
CAUF3636D6*	3	23	20⅞	19⅞	¾	¾	.071	36
CAUF3642C6*	3-3½	20	20⅞	19	¾	¾	.078	29
CAUF3642D6*	3-3½	23	20⅞	19⅞	¾	¾	.078	34
CAUF3743C6*	3-3½	20	20⅞	28⅛	¾	⅞	.078	46
CAUF3743D6*	3-3½	23	20⅞	27¾	¾	⅞	.078	43
CAUF4860C6*	4-5	20	20⅞	28	¾	⅞	.093	48
CAUF4860D6*	4-5	23	20⅞	28	¾	⅞	.093	39
CAUF4961C6*	4-5	20	20⅞	28	¾	⅞	.093	54
CAUF4961D6*	4-5	23	20⅞	27	¾	⅞	.093	59

Daikin Comfort Technologies Manufacturing, L.P. reserves the right to discontinue, or change at any time, specifications or designs without notice or without incurring obligations.

Limited Warranty*

* Complete warranty details available from your local dealer or at www.amana-hac.com. To receive the 10-Year Parts Limited Warranty, online registration must be completed within 60 days of installation. Online registration is not required in California or Quebec. The duration of warranty coverages in Texas differs in some cases.



The Amana brand all-aluminum CAUF Uncased Upflow/Downflow Indoor Coils are made for split system air conditioners and heat pumps. This coil features aluminum tubing and corrugated aluminum fins and rust-resistant, high-temperature, thermoplastic drain pans.



Standard Features

- All-Aluminum evaporator coil
- Optimized for use with R-410A refrigerant
- Some models suitable for use with R-410A or R-22 refrigerant
- Check flowrator for cooling and heat pump applications
- AHRI certified; ETL listed
- Rust resistant, thermoplastic drain pans featuring a low water-retention design
- DecaBDE-free thermoplastic drain pan with secondary drain connections
- UV-resistant drain pan

CAUFA / Uncased Indoor "A" / Upflow

Model	Nominal Tons	Dimensions			Connection		Piston Size	Ship Weight (lbs)
		W"	D"	H"	Liquid"	Suction"		
CAUFA1714A6	1½	12⅞	20	11¼	3/8	3/4	0.051	16
CAUFA1714B6	1½	16⅜	20	11⅞	3/8	3/4	0.051	18
CAUFA1818A6	1½	12⅞	20	14⅝	3/8	3/4	0.055	18
CAUFA1818B6	1½	16⅜	20	14½	3/8	3/4	0.055	20
CAUFA1818C6	1½	19⅞	20	14⅜	3/8	3/4	0.055	26
CAUFA2318A6	2	12⅞	20	14⅝	3/8	3/4	0.057	18
CAUFA2318B6	2	16⅜	20	14½	3/8	3/4	0.057	20
CAUFA2318C6	2	19⅞	20	14⅜	3/8	3/4	0.057	26
CAUFA2418A6	2	12⅞	20	14⅝	3/8	3/4	0.057	18
CAUFA2418B6	2	16⅜	20	14½	3/8	3/4	0.057	20
CAUFA2418C6	2	19⅞	20	14⅜	3/8	3/4	0.057	26
CAUFA2422A6	2	12⅞	20	18⅞	3/8	3/4	0.059	26
CAUFA2422B6	2	16⅜	20	17⅞	3/8	3/4	0.059	28
CAUFA2422C6	2	19⅞	20	17⅜	3/8	3/4	0.059	30
CAUFA2922A6	2½	12⅞	20	18⅞	3/8	3/4	0.065	26
CAUFA2922B6	2½	16⅜	20	17⅞	3/8	3/4	0.065	28
CAUFA2922C6	2½	19⅞	20	17⅜	3/8	3/4	0.065	30
CAUFA3022A6	2½	12⅞	20	18⅞	3/8	3/4	0.063	26
CAUFA3022B6	2½	16⅜	20	17⅞	3/8	3/4	0.063	28
CAUFA3022C6	2½	19⅞	20	17⅞	3/8	3/4	0.063	30
CAUFA3022D6	2½	23⅜	20	17¼	3/8	3/4	0.063	32
CAUFA3526B6	3	16⅜	20	21	3/8	7/8	0.065	30
CAUFA3526C6	3	19⅞	20	20¾	3/8	7/8	0.065	31
CAUFA3626B6	3	16⅜	20	21	3/8	7/8	0.065	30
CAUFA3626C6	3	19⅞	20	20¾	3/8	7/8	0.065	31
CAUFA3626D6	3	23⅜	20	20⅝	3/8	7/8	0.065	35
CAUFA4226B6	3½	16⅜	20	24⅜	3/8	7/8	0.071	28
CAUFA4226C6	3½	19⅞	20	24	3/8	7/8	0.071	30
CAUFA4226D6	3½	23⅜	20	23⅝	3/8	7/8	0.071	33

Daikin Comfort Technologies Manufacturing, L.P. reserves the right to discontinue, or change at any time, specifications or designs without notice or without incurring obligations.

Limited Warranty*

* Complete warranty details available from your local dealer or at www.amana-hac.com. To receive the 10-Year Parts Limited Warranty, online registration must be completed within 60 days of installation. Online registration is not required in California or Quebec. The duration of warranty coverages in Texas differs in some cases.



AlumaFin7
Evaporator Coil

The Amana brand all-aluminum CAUF Uncased Upflow/Downflow Indoor Coils are made for split system air conditioners and heat pumps. This coil features aluminum tubing and corrugated aluminum fins and rust-resistant, high-temperature, thermoplastic drain pans.



Standard Features

- Compact and lightweight all-aluminum evaporator coil with AlumaFin™ technology
- DecaBDE-free thermoplastic drain pan with secondary drain connections
- Optimized for use with R-410A refrigerant
- AHRI certified
- ETL Listed
- 7mm tubes designed with patented grooves to maximize heat transfer
- Hydrophilic fins provide superior condensate management
- Check flowrator for cooling and heat pump applications
- UV and mold resistant thermoplastic condensate drain pans featuring a 'no water-retention' design

CHPF / Cased Indoor "A" / Horizontal

Model	Cabinet Dimensions			Plenum Opening		Nominal Tons	Connection		Ship Weight (lbs)
	D"	W"	H"	D"	H"		Liquid"	Suction"	
CHPF1824A6*	21 $\frac{1}{8}$	26	14	19	13	1 $\frac{1}{2}$ -2	$\frac{3}{8}$	$\frac{3}{4}$	36
CHPF2430B6*	21 $\frac{1}{8}$	26	17 $\frac{1}{2}$	19	16 $\frac{1}{2}$	2-2 $\frac{1}{2}$	$\frac{3}{8}$	$\frac{3}{4}$	55
CHPF3636B6*	21 $\frac{1}{8}$	26	17 $\frac{1}{2}$	19	16 $\frac{1}{2}$	3	$\frac{3}{8}$	$\frac{3}{4}$	50
CHPF3642C6*	21 $\frac{1}{8}$	26	21	19	20	3-3 $\frac{1}{2}$	$\frac{3}{8}$	$\frac{3}{4}$	63
CHPF3743C6*	21 $\frac{1}{8}$	26	21	19	20	3- $\frac{1}{2}$	$\frac{3}{8}$	$\frac{7}{8}$	63
CHPF4860D6*	21 $\frac{1}{8}$ "	26	24 $\frac{1}{2}$	19	23 $\frac{1}{2}$	4-5	$\frac{3}{8}$	$\frac{7}{8}$	77

Daikin Comfort Technologies Manufacturing, L.P. reserves the right to discontinue, or change at any time, specifications or designs without notice or without incurring obligations.

Limited Warranty*

* Complete warranty details available from your local dealer or at www.amana-hac.com. To receive the 10-Year Parts Limited Warranty, online registration must be completed within 60 days of installation. Online registration is not required in California or Quebec. The duration of warranty coverages in Texas differs in some cases.



The Amana brand all-aluminum CHPF Cased Horizontal "A" Coils are made for split system air conditioners and heat pumps. Each coil is made of quality galvanized steel with a painted, leather grain-embossed finish. This cabinet is painted architectural gray.



Standard Features

- All-Aluminum evaporator coil
- Optimized for use with R-410A refrigerant
- Some models suitable for use with R-410A or R-22 refrigerant
- Check flowrator for cooling and heat pump applications
- AHRI certified; ETL listed

Cabinet Features

- 21" depth for easier attic access
- Split seam front for easy access
- Foil-faced insulation covers the internal casing to reduce cabinet condensation
- Galvanized, leather grain-embossed finish
- Rust resistant, thermoplastic drain pans featuring a low water-retention design
- DecaBDE-free thermoplastic drain pan with secondary drain connections
- UV-resistant drain pan

CHPT / Cased Indoor "A" / Horizontal

Model	Nominal Tons	Dimensions			Connection	
		W"	D"	H"	Liquid"	Suction"
CHPT4860D4**	3 1/2 - 5	26	21 1/8	24 1/2	3/8	7/8

Daikin Comfort Technologies Manufacturing, L.P. reserves the right to discontinue, or change at any time, specifications or designs without notice or without incurring obligations.

Limited Warranty*

* Complete warranty details available from your local dealer or at www.amana-hac.com. To receive the 10-Year Parts Limited Warranty, online registration must be completed within 60 days of installation. Online registration is not required in California or Quebec. The duration of warranty coverages in Texas differs in some cases.



The Amana brand all-aluminum CHPT cased Upflow/Downflow Indoor Coils are made for split system air conditioners and heat pumps. This coil features aluminum tubing and corrugated aluminum fins and rust-resistant, high-temperature, thermoplastic drain pans.



Standard Features

- All-Aluminum evaporator coil
- Optimized for use with R-410A refrigerant
- Some models suitable for use with R-410A or R-22 refrigerant
- CAPT, CAPTA, CHPT, CHPTA models feature factory-installed thermal expansion valves for cooling and heat pump applications
- CAPF, CAPFA, CAUF, CAUFA, CHPF, CSCF models feature a check flowrator for cooling and heat pump applications
- Vertical and horizontal models available

Cabinet Features

- 21" depth for easier attic access
- Foil-faced insulation covers the internal casing to reduce cabinet condensation
- Galvanized, leather grain-embossed finish
- Rust resistant, thermoplastic drain pans featuring a low water-retention design
- DecaBDE-free thermoplastic drain pan with secondary drain connections
- UV-resistant drain pan
- AHRI certified; ETL listed

CHPTA / Cased Indoor "A" / Horizontal

Model	Nominal Tons	Dimensions			Connection	
		W"	D"	H"	Liquid"	Suction"
CHPTA1822A4	1.5	22	21	14	3/8"	3/4"
CHPTA1822B4	1.5	22	21	17.5	3/8"	3/4"
CHPTA2426B4	2	26	21	17.5	3/8"	7/8"
CHPTA2426C4	2	26	21	21	3/8"	7/8"
CHPTA3026B4	2.5	26	21	17.5	3/8"	7/8"
CHPTA3026C4	2.5	26	21	21	3/8"	7/8"
CHPTA3630B4	3	30	21	17.5	3/8"	7/8"
CHPTA3630C4	3	30	21	21	3/8"	7/8"

Daikin Comfort Technologies Manufacturing, L.P. reserves the right to discontinue, or change at any time, specifications or designs without notice or without incurring obligations.

Limited Warranty*

* Complete warranty details available from your local dealer or at www.amana-hac.com. To receive the 10-Year Parts Limited Warranty, online registration must be completed within 60 days of installation. Online registration is not required in California or Quebec. The duration of warranty coverages in Texas differs in some cases.



The Amana brand all-aluminum CHPTA Cased Horizontal "A" Coils are made for split system air conditioners and heat pumps. Each coil is made of quality galvanized steel with a painted, leather grain-embossed finish. This cabinet is painted architectural gray.



Standard Features

- All-Aluminum evaporator coil
- Optimized for use with R-410A refrigerant
- Some models suitable for use with R-410A or R-22 refrigerant
- CAPT, CAPTA, CHPT, CHPTA models feature factory-installed thermal expansion valves for cooling and heat pump applications
- CAPF, CAPFA, CAUF, CAUFA, CHPF, CSCF models feature a check flowrator for cooling and heat pump applications
- Vertical and horizontal models available

Cabinet Features

- 21" depth for easier attic access
- Foil-faced insulation covers the internal casing to reduce cabinet condensation
- Galvanized, leather grain-embossed finish
- Rust resistant, thermoplastic drain pans featuring a low water-retention design
- DecaBDE-free thermoplastic drain pan with secondary drain connections
- UV-resistant drain pan
- AHRI certified; ETL listed

CSCF / Cased Indoor Slab / Horizontal

Model	Cabinet Dimensions			Plenum Opening		Capacity (Tons)	Connection Size		Ship Weight (lbs)
	W"	D"	H"	D"	H"		Liquid"	Suction"	
CSCF1824N6*	25½	12	25	16	21	1½-2	¾	¾	43
CSCF3036N6*	33½	12	25	24	21	2½-3	¾	7/8	52.5
CSCF3642N6*	39½	12	25	30	21	3-3½	¾	7/8	43
CSCF4860N6*	39½	12	25	30	21	4-5	¾	7/8	60

Daikin Comfort Technologies Manufacturing, L.P. reserves the right to discontinue, or change at any time, specifications or designs without notice or without incurring obligations.

Limited Warranty*

* Complete warranty details available from your local dealer or at www.amana-hac.com. To receive the 10-Year Parts Limited Warranty, online registration must be completed within 60 days of installation. Online registration is not required in California or Quebec. The duration of warranty coverages in Texas differs in some cases.



The Amana brand CSCF Horizontal Slab Evaporator Coils are made for split system air conditioners and heat pumps. This unit features a check flowrator expansion device and rust-resistant, high-temperature, thermoplastic drain pan. Each coil's cabinet has a quality, galvanized-steel finish.



Standard Features

- All-Aluminum evaporator coil
- Optimized for use with R-410A refrigerant
- Some models suitable for use with R-410A or R-22 refrigerant
- Check flowrator for cooling and heat pump applications
- AHRI certified; ETL listed

Cabinet Features

- Split seam front for easy access
- Foil-faced insulation covers the internal casing to reduce cabinet condensation
- Galvanized, leather grain-embossed finish
- Rust resistant, thermoplastic drain pans featuring a low water-retention design
- DecaBDE-free thermoplastic drain pan with secondary drain connections
- UV-resistant drain pan

PACKAGED UNITS



APCH3 / Energy-Efficient Scroll Compressor / 13.4 SEER2

Model	Cooling Capacity		SEER2/ EER2	Electric Heat (kW)	Voltage- Phase	Dimensions			dBs	"Ship Weight (lbs)"
	Tons	CFM				W"	D"	H"		
APCH32441*	2	875	13.4 / 10.6	5, 8, 10	208/230-1	66	34	22	76	310
APCH33041*	2½	1,050	13.4 / 10.6	5, 8, 10,15	208/230-1	66	34	22	76	315
APCH33641*	3	1,200	13.4 / 10.6	5, 8, 10,15	208/230-1	66	34	22	78	320
APCH34241*	3½	1,200	13.4 / 10.6	5, 8, 10,15, 20	208/230-1	66	34	24	78	374
APCH34841*	4	1,600	13.4 / 10.6	5, 8, 10,15, 20	208/230-1	66	34	24	80	375
APCH36041*	5	1,600	13.4 / 10.6	5, 8, 10,15, 20	208/230-1	66	34	24	80	380

Daikin Comfort Technologies Manufacturing, L.P. reserves the right to discontinue, or change at any time, specifications or designs without notice or without incurring obligations.

**Limited
Warranty***

* Complete warranty details available from your local dealer or at www.amana-hac.com. To receive the 10-Year Parts Limited Warranty, online registration must be completed within 60 days of installation. Online registration is not required in California or Quebec. The duration of warranty coverages in Texas differs in some cases.



The **Amana** brand APCH3 Packaged Air Conditioner contains an energy-efficient Scroll compressor and multi-speed blower motor. The APCH3 is designed for the consumer who desires comfort and quiet operation.



**20
23
SEER2**

Standard Features

- Energy-efficient scroll compressor
- Multi-speed ECM indoor blower motor
- Quiet horizontal discharge
- All-Aluminum evaporator coil
- Copper tube / aluminum fin condenser coil
- Compressor sound blanket
- Totally enclosed, permanently lubricated condenser fan motor
- Fully charged system
- 5 kW to 20 kW electric heat kit available as a field-installed option
- AHRI Certified; ETL listed

Cabinet Features

- Heavy-gauge galvanized-steel cabinet with attractive Architectural Gray powder-paint finish
- Aluminum foil-facing internal insulation reinforced with fiberglass scrim
- Meets cabinet air leakage requirements when tested in accordance with ASHRAE standard 193
- Fully insulated blower compartment with convenient access panels
- Louvered condenser coil protection
- One footprint for all tonnages
- When properly anchored, meets the 2020 Florida Building Code unit integrity requirements for hurricane-type winds (Anchor bracket kits available.)

APHH5 / High-Efficiency Scroll Compressor / Up to 15.2 SEER2 / 6.7 HSPF2

Model	Nominal Ratings			Electric Heat (kW)	SEER2/ EER2	Voltage-Phase/ Hz	Dimensions			dBs	Ship Weight (lbs)
	Cooling ¹	Heating ¹	CFM				W"	D"	H"		
APHH52441**	24,000	24,000	875	5, 8, 10	15.0 / 11.4	208/230-1	66	34	30	76	325
APHH53041**	30,000	30,000	1,050	5, 8, 10,15	15.2 / 11.9	208/230-1	66	34	30	76	325
APHH53641**	36,000	36,000	1,200	5, 8, 10,15	15.2 / 11.4	208/230-1	66	34	35	78	385
APHH54241*	42,000	42,000	1,300	5, 8, 10,15, 20	15.2 / 11.2	208/230-1	66	34	35	79	385
APHH54841**	48,000	48,000	1,600	5, 8, 10,15, 20	15.2 / 10.6	208/230-1	66	34	35	78	410
APHH56041**	60,000	60,000	1,700	5, 8, 10,15, 20	15.2 / 11.4	208/230-1	66	34	38.75	80	415

¹ Tons

Daikin Comfort Technologies Manufacturing, L.P. reserves the right to discontinue, or change at any time, specifications or designs without notice or without incurring obligations.

Limited Warranty*

* Complete warranty details available from your local dealer or at www.amana-hac.com. To receive the Lifetime Compressor Limited Warranty (good for as long as you own your home), and 10-Year Parts Limited Warranty, online registration must be completed within 60 days of installation. Online registration is not required in California or Quebec. The duration of warranty coverages in Texas differs in some cases.



The Amana brand APHH5 Packaged Heat Pump contains an high-efficiency scroll compressor and variable-speed blower motor. The APHH5 is designed for the consumer who desires comfort and quiet operation.



Standard Features

- High-efficiency scroll compressor
- Variable-speed ECM indoor blower motor
- Quiet horizontal discharge
- All-aluminum evaporator coil
- Copper tube / aluminum fin condenser coils
- Compressor sound blanket
- Totally enclosed, permanently lubricated condenser fan motor
- Fully charged system
- Electric heat kit available as a field-installed option
- AHRI certified; ETL listed

Cabinet Features

- Heavy-gauge galvanized-steel cabinet
- Attractive architectural gray powder-paint finish
- Aluminum foil-facing internal insulation reinforced with fiberglass scrim
- Meets cabinet air leakage requirements when tested in accordance with ASHRAE standard 193
- Fully insulated blower compartment with convenient access panels
- Louvered condenser coil protection
- One footprint for all tonnages
- When properly anchored, meets the 2020 Florida Building Code unit integrity requirements for hurricane-type winds (Anchor bracket kits available.)

APHM5 / High-Efficiency / 15.2 SEER2 / 6.7 HSPF2

Model	Nominal Ratings			Electric Heat (kW)	SEER2 / EER2	Voltage-Phase	MCA	MOP	Dimensions			dBs	Ship Weight (lbs)
	Cooling ¹	Heating ²	CFM						W"	D"	H"		
APHM52441A*	2	22800	850	5,8,10	15.2 / 11.4	208 / 230-1	19.2	30	47	51	34 3/4	76	376
APHM53041A*	2 1/2	28600	1050	5,8,10,15	15.2 / 11.4	208 / 230-1	22	35	47	51	34 3/4	76	385
APHM53641A*	3	33800	1200	5,8,10,15	15.2 / 11.4	208 / 230-1	23.3	35	47	51	34 3/4	76	492
APHM54241A*	3 1/2	38500	1300	5,8,10,15	15.2 / 11.4	208 / 230-1	33.1	50	47	51	42 3/4	78	492
APHM54841A*	4	44500	1600	5,8,10,15,20	15.2 / 11.2	208 / 230-1	34.7	50	47	51	42 3/4	78	492
APHM56041A*	5	58500	2000	5,10,15,20	15.2 / 11.2	208 / 230-1	39	60	73 3/8	47 5/8	43 1/2	78	688

¹ Tons ² BTU/h

Daikin Comfort Technologies Manufacturing, L.P. reserves the right to discontinue, or change at any time, specifications or designs without notice or without incurring obligations.

Limited Warranty*

* Complete warranty details available from your local dealer or at www.amana-hac.com. To receive the Lifetime Compressor Limited Warranty (good for as long as you own your home), and 10-Year Parts Limited Warranty, online registration must be completed within 60 days of installation. Online registration is not required in California or Quebec. The duration of warranty coverages in Texas differs in some cases.



The Amana brand APHM5 Packaged Heat Pump contains a high-efficient compressor and variable-speed blower motor. The APHM5 is designed for the consumer who desires comfort and quiet operation.



**20
23
SEER2**

Standard Features

- High-efficiency two-stage scroll compressor
- Variable-speed ECM indoor blower motor
- Multi-speed ECM indoor blower motor 5-ton units
- Convertible airflow: horizontal or downflow
- Copper tube / aluminum fin condenser coils
- Compressor sound blanket
- All-aluminum evaporator coil on 2- to 4-ton units
- Aluminum-copper evaporator coil on 5-ton units
- Electric heat kit available as a field-installed option
- AHRI Certified; ETL Listed

Cabinet Features

- Heavy-gauge galvanized-steel cabinet with attractive two-tone Architectural Gray powder-paint finish
- Aluminum foil-facing internal insulation reinforced with fiberglass scrim
- Fully insulated air-handling compartment with convenient access panels
- Louvered condenser coil protection
- Meets cabinet air leakage requirements when tested in accordance with ASHRAE standard 193
- When properly anchored, meets the 2020 Florida Building Code unit integrity requirements for hurricane-type winds (Anchor bracket kits available)

APHH3 / Energy-Efficient Scroll Compressor / 13.4 SEER2 / 6.7 HSPF2

Model	Nominal Ratings			Electric Heat (kW)	SEER2 / EER2	Voltage-Phase	Dimensions			dBs	Ship Weight (lbs)
	Cooling ¹	CFM ²	Heating				W"	D"	H"		
APHH32441**	24,000	875	22,800	5, 8, 10	14.5 / 12.0	208/230-1	66	34	30	76	324
APHH33041**	30,000	1,050	27,600	5, 8, 10,15	14.0 / 12.0	208/230-1	66	34	30	76	324
APHH33641**	36,000	1,200	32,200	5, 8, 10,15	14.0 / 11.5	208/230-1	66	34	35	78	387
APHH34241**	42,000	1,300	37,600	5, 8, 10,15, 20	14.0 / 12.0	208/230-1	66	34	35	78	387
APHH34841**	48,000	1,600	44,000	5, 8, 10,15, 20	14.0 / 12.0	208/230-1	66	34	35	80	412
APHH36041**	60,000	1,700	54,500	5, 8, 10,15, 20	14.0 / 11.5	208/230-1	66	34	38¾	80	412

¹ Tons ² BTU/h

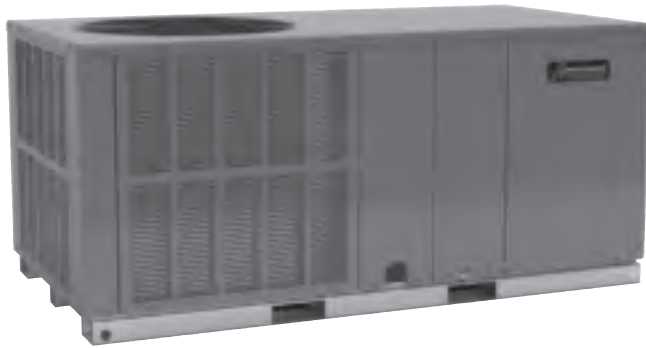
Daikin Comfort Technologies Manufacturing, L.P. reserves the right to discontinue, or change at any time, specifications or designs without notice or without incurring obligations.

Limited Warranty*

* Complete warranty details available from your local dealer or at www.amana-hac.com. To receive the 10-Year Parts Limited Warranty, online registration must be completed within 60 days of installation. Online registration is not required in California or Quebec. The duration of warranty coverages in Texas differs in some cases.



The Amana brand APHH3 Packaged Heat Pump contains an energy-efficient scroll compressor and multi-speed blower motor. The APHH3 is designed for the consumer who desires comfort and quiet operation.



Standard Features

- Energy-efficient scroll compressor
- Multi-speed ECM indoor blower motor
- Quiet horizontal discharge
- All-Aluminum evaporator coil
- Copper tube / aluminum fin condenser coil
- Compressor sound blanket
- Totally enclosed, permanently lubricated condenser fan motor
- Fully charged system
- Electric heat kit available as a field-installed option
- AHRI certified; ETL listed

Cabinet Features

- Heavy-gauge galvanized-steel cabinet
- Attractive architectural gray powder-paint finish
- Aluminum foil-facing internal insulation reinforced with fiberglass scrim
- Meets cabinet air leakage requirements when tested in accordance with ASHRAE standard 193
- Fully insulated blower compartment with convenient access panels
- Louvered condenser coil protection
- One footprint for all tonnages
- When properly anchored, meets the 2020 Florida Building Code unit integrity requirements for hurricane-type winds (Anchor bracket kits available.)

APHM3 / Energy-Efficient Compressor / 13.4 SEER2 / 6.7 HSPF2

Model	Nominal Ratings			Electric Heat (kW)	SEER2 / EER2	Voltage-Phase	Dimensions			dBs	Ship Weight (lbs)
	Cooling ¹	Heating ²	CFM				W"	D"	H"		
APHM32441	24,000	24000	850	5,8,10	13.4 / 10.6	208 / 230-1	47	51	34 3/4	76	380
APHM33041	30,000	30,000	1,050	5,8,10,15	13.4 / 10.6	208 / 230-1	47	51	34 3/4	76	390
APHM33641	36,000	36,000	1,200	5,8,10,15	13.4 / 10.6	208 / 230-1	47	51	34 3/4	81	400
APHM34241	42,000	42,000	1,300	5,8,10,15	13.4 / 10.6	208 / 230-1	47	51	42 3/4	80	410
APHM34841	48,000	48,000	1,600	5,8,10,15,20	13.4 / 10.6	208 / 230-1	47	51	42 3/4	79	475
APHM36041	60,000	60,000	1,850	5,8,10,15,20	13.4 / 10.6	208 / 230-1	47	51	42 3/4	80	495

¹ Tons ² BTU/h

Daikin Comfort Technologies Manufacturing, L.P. reserves the right to discontinue, or change at any time, specifications or designs without notice or without incurring obligations.

Limited Warranty*

* Complete warranty details available from your local dealer or at www.amana-hac.com. To receive the 10-Year Parts Limited Warranty, online registration must be completed within 60 days of installation. Online registration is not required in California or Quebec. The duration of warranty coverages in Texas differs in some cases.



The **Amana** brand APHM3 Packaged Heat Pump contains an energy-efficient scroll compressor and multi-speed blower motor. This unit is designed for the consumer who desires comfort and quiet operation.



**20
23
SEER2**

Standard Features

- Energy-efficient scroll compressor
- Multi-speed ECM indoor blower motor
- All-Aluminum evaporator coil
- Copper tube / aluminum fin condenser coils
- Compressor sound blanket
- Liquid-line filter drier
- Convertible airflow: horizontal or downflow
- Electric heat kit available as a field-installed option
- AHRI certified; ETL listed

Cabinet Features

- Heavy-gauge galvanized-steel cabinet with attractive two-tone Architectural Gray powder-paint finish
- Aluminum foil-facing internal insulation reinforced with fiberglass scrim
- Fully insulated air-handling compartment with convenient access panels
- Meets cabinet air leakage requirements when tested in accordance with ASHRAE standard 193
- Louvered condenser coil protection
- One footprint for all tonnages
- When properly anchored, meets the 2020 Florida Building Code unit integrity requirements for hurricane-type winds (Anchor bracket kits available)

APGM5 / High-Efficiency Scroll Compressor / Up to 15.2 SEER2 / 81% AFUE

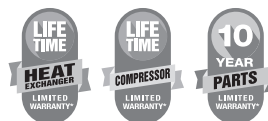
Model	Nominal Ratings			Voltage-Phase	Dimensions			dBs	Ship Weight (lbs)
	Cooling ¹	Gas Heat ²	CFM		W"	D"	H"		
APGM52406041A*	2	60,000	800	208/230-1	47	51	34¾	77	380
APGM53008041A*	2½	80,000	950	208/230-1	47	51	34¾	76	407
APGM53608041A*	3	80,000	1,200	208/230-1	47	51	42¾	78	500
APGM54210041A*	3½	100,000	1,250	208/230-1	47	51	42¾	79	505
APGM54810041A*	4	100,000	1,300	208/230-1	47	51	42¾	78	500
APGM56014041A*	5	140,000	1,800	208/230-1	73 3/8	47 5/8	43½	78	688

¹ Tons ² BTU/h

Daikin Comfort Technologies Manufacturing, L.P. reserves the right to discontinue, or change at any time, specifications or designs without notice or without incurring obligations.

Limited Warranty*

* Complete warranty details available from your local dealer or at www.amana-hac.com. To receive the Lifetime Heat Exchanger Limited Warranty, Lifetime Compressor Limited Warranty (in each case, good for as long as you own your home), 2-Year Unit Limited Warranty and 10-Year Parts Limited Warranty, online registration must be completed within 60 days of installation. Online registration and some of the additional requirements are not required in California or Quebec. The duration of warranty coverages in Texas differs in some cases.



The **Amana** brand APGM5 Packaged Gas-Electric Unit contains a high-efficiency scroll compressor and variable-speed blower motor. The two-stage gas valve allows for easy conversion from natural gas to propane gas. The APGM5 is designed for the consumer who desires comfort and quiet operation.



**20
23
SEER2**

Standard Features

- Heavy-duty stainless-steel heat exchanger
- High-efficiency two-stage scroll compressor with factory-installed sound blanket
- Variable-speed ECM indoor blower motor
- All-aluminum evaporator coil on 2- to 4-ton units
- Aluminum-copper evaporator coil on 5-ton units
- Two-stage gas valve; natural gas with easy conversion to propane with accessory kit
- Power-assisted combustion
- All blower operation and all safety circuits complete with self-diagnostics
- Direct-spark ignition system, including a micro-processor-based control for the entire ignition sequence
- Low and high-pressure switch protection
- All models comply with California Low NOx standards (40ng/J NOx)
- This furnace does not comply with the SCAQMD Rule 1111 nor the SJVAPCD Rule 4905 14 ng/J NOx emission limit and therefore is not eligible for installation in California's South Coast Air

Quality Management District (SCAQMD) nor the San Joaquin Valley Air Pollution Control District (SJVAPCD)

- AHRI Certified; ETL Listed

Cabinet Features

- Fully insulated heavy-gauge, zinc-coated steel cabinet with UV-resistant powder-paint finish
- Aluminum foil-facing internal insulation reinforced with fiberglass scrim
- Compressor grommets for vibration isolation
- Convenient access panels
- One roof curb fits 2-4 ton units
- Bottom 2" high base rails for easier handling
- 2-4 ton models fit a standard-size pick-up truck
- When properly anchored, meets 2020 Florida Building Code unit integrity requirements for hurricane-type winds (Anchor bracket kits available.)

APGM3 / Energy-Efficient Scroll Compressor / 13.4 SEER2 / 81% AFUE

Model	Nominal Ratings			SEER2 / EER2	Voltage-Phase	Dimensions			dBs	Ship Weight (lbs)
	Cooling ¹	Heating ²	CFM			W"	D"	H"		
APGM32404041	2	40,000	800	13.4 / 10.6	208/230-1	47	51	34½	78	435
APGM32406041	2	60,000	800	13.4 / 10.6	208/230-1	47	51	34½	78	439
APGM33004041	2½	40,000	1,000	13.4 / 10.6	208/230-1	47	51	34½	78	438
APGM33006041	2½	60,000	1,000	13.4 / 10.6	208/230-1	47	51	34½	78	442
APGM33604041	3	40,000	1,200	13.4 / 10.6	208/230-1	47	51	34½	78	470
APGM33606041	3	60,000	1,200	13.4 / 10.6	208/230-1	47	51	34½	78	475
APGM33608041	3	80,000	1,200	13.4 / 10.6	208/230-1	47	51	34½	78	480
APGM34206041	3½	60,000	1,300	13.4 / 10.6	208/230-1	47	51	34½	78	515
APGM34208041	3½	80,000	1,300	13.4 / 10.6	208/230-1	47	51	34½	78	520
APGM34806041	4	60,000	1,525	13.4 / 10.6	208/230-1	47	51	42½	79	540
APGM34808041	4	80,000	1,525	13.4 / 10.6	208/230-1	47	51	42½	79	545
APGM34810041	4	100,000	1,525	13.4 / 10.6	208/230-1	47	51	42½	79	550
APGM36108041	5	80,000	1,750	13.4 / 10.6	208/230-1	47	51	42½	78	555
APGM36110041	5	100,000	1,750	13.4 / 10.6	208/230-1	47	51	42½	78	560
APGM36112041	5	120,000	1,750	13.4 / 10.6	208/230-1	47	51	42½	78	565

¹ Tons ² BTU/h

Daikin Comfort Technologies Manufacturing, L.P. reserves the right to discontinue, or change at any time, specifications or designs without notice or without incurring obligations.

Limited Warranty*

* Complete warranty details available from your local dealer or at www.amana-hac.com. To receive the Lifetime Heat Exchanger Limited Warranty (good for as long as you own your home), and 10-Year Parts Limited Warranty, online registration must be completed within 60 days of installation. Online registration and some of the additional requirements are not required in California or Quebec. The duration of warranty coverages in Texas differs in some cases.



The Amana brand APM3 Packaged Gas-Electric Unit contains an energy-efficient compressor and multi-speed blower motor. The redundant gas valve allows for easy conversion from natural gas to propane gas. The APM3 is designed for the consumer who desires comfort and quiet operation.



Standard Features

- Heavy-duty stainless-steel heat exchanger
- Energy-efficient scroll compressor
- Multi-speed ECM indoor blower motor
- All-aluminum evaporator coil
- Compressor sound blanket
- Power-assisted combustion
- Direct spark ignition system includes a microprocessor-based control for the entire ignition sequence, all blower operation, and all safety circuits complete with self-diagnostics
- All models comply with California Low NOx standards (40ng/J NOx)
- This furnace does not comply with the SCAQMD Rule 1111 nor the SJVAPCD Rule 4905 14 ng/J NOx

emission limit and therefore is not eligible for installation in California's South Coast Air Quality Management District (SCAQMD) nor the San Joaquin Valley Air Pollution Control District (SJVAPCD)

- AHRI Certified; ETL Listed

Cabinet Features

- High-quality UV-resistant powder-paint finish
- Aluminum foil-facing internal insulation reinforced with fiberglass scrim
- Horizontal or downflow application
- Convenient access panels
- One roof curb fits all units
- Fully insulated cabinet
- Bottom, 2" high base rails for easier handling
- One footprint for all tonnages

APUM3 / Energy-Efficient Compressor / 13.4 SEER2 / 81% AFUE

Model	Nominal Ratings			SEER2 / EER2	Voltage-Phase	Dimensions			dBs	Ship Weight (lbs)
	Cooling ¹	Heating ²	CFM			W"	D"	H"		
APUM32404041	2	40,000	800	13.4 / 10.6	208/230-1	47	51	34½	78	435
APUM33006041	2½	60,000	1,000	13.4 / 10.6	208/230-1	47	51	34½	78	442
APUM33606041	3	60,000	1,200	13.4 / 10.6	208/230-1	47	51	34½	78	520
APUM34208041	3½	80,000	1,300	13.4 / 10.6	208/230-1	47	51	42½	78	545
APUM34808041	4	80,000	1,525	13.4 / 10.6	208/230-1	47	51	42½	79	555
APUM36108041	5	80,000	1,700	13.4 / 10.6	208/230-1	47	51	42½	78	555

¹ Tons ² BTU/h

Daikin Comfort Technologies Manufacturing, L.P. reserves the right to discontinue, or change at any time, specifications or designs without notice or without incurring obligations.

Limited Warranty*

* Complete warranty details available from your local dealer or at www.amana-hac.com. To receive the Lifetime Heat Exchanger Limited Warranty (good for as long as you own your home), and 10-Year Parts Limited Warranty, online registration must be completed within 60 days of installation. Online registration and some of the additional requirements are not required in California or Quebec. The duration of warranty coverages in Texas differs in some cases.



The Amana brand APUM3 Ultra-Low NOx Packaged Gas-Electric Unit contains an energy efficient compressor and multi-speed blower motor. The redundant gas valve allows for easy conversion from natural gas to propane gas. The APUM3 is designed for the consumer who desires comfort and quiet operation.



Standard Features

- Heavy-duty stainless-steel heat exchanger
- Energy-efficient scroll compressor
- Multi-speed ECM indoor blower motor
- All-aluminum evaporator coil
- Compressor sound blanket
- Power-assisted combustion
- Direct spark ignition system includes a microprocessor-based control for the entire ignition sequence, all blower operation, and all safety circuits complete with self-diagnostics
- California Ultra-Low NOx emissions compliant
- Eligible for installation in California's South Coast Air Quality Management District (SCAQMD) and San Joaquin Valley Air Pollution Control District (SJVUAPCD). This gas packaged unit furnace complies with the 14 ng/J NOx emission limit in SCAQMD Rule 1111 and SJVUAPCD Rule 4905. This gas packaged unit furnace is eligible for the SCAQMD Clean Air Furnace Rebate Program: www.CleanAirFurnaceRebate.com
- AHRI Certified; ETL Listed

Cabinet Features

- High-quality UV-resistant powder-paint finish
- Aluminum foil-facing internal insulation reinforced with fiberglass scrim
- Horizontal or downflow application
- Convenient access panels
- One roof curb fits all units
- Fully insulated cabinet
- Bottom, 2" high base rails for easier handling
- One footprint for all tonnages

APDM3 / Energy-Efficient Compressor / 13.4 SEER2 / 81% AFUE / 6.7 HSPF2

Model	Nominal Ratings			Voltage/ Phase/Hz	Dimensions			dBs	Ship Weight (lbs)
	Cooling ¹	Heating ¹	Gas Heat ²		W"	D"	H"		
APDM32406041	23,800	23,500	60,000	208-230/ 1/ 61	47	51	34¾	76	440
APDM33008041	28,500	28,500	80,000	208-230/ 1/ 61	47	51	34¾	76	440
APDM33608041	34,200	34,400	80,000	208-230/ 1/ 61	47	51	34¾	76	440
APDM34210041	40,500	39,600	100,000	208-230/ 1/ 61	47	51	42¾	76	545
APDM34810041	44,500	43,285	100,000	208-230/ 1/ 61	47	51	42¾	76	545

¹ Tons ² BTU/h

Daikin Comfort Technologies Manufacturing, L.P. reserves the right to discontinue, or change at any time, specifications or designs without notice or without incurring obligations.

Limited Warranty*

* Complete warranty details available from your local dealer or at www.amana-hac.com. To receive the Lifetime Compressor Limited Warranty and Lifetime Heat Exchanger Limited Warranty (in each case, good for as long as you own your home), and 10-Year Parts Limited Warranty, online registration must be completed within 60 days of installation. Online registration is not required in California or Quebec. The duration of warranty coverages in Texas differs in some cases.



The Amana brand APDM3 Packaged Dual Fuel (Gas-Electric Heat Pump) Unit contains a high-efficiency scroll compressor and High-efficiency blower motor. The two-stage gas valve allows for easy conversion from natural gas to propane gas. The APDM3 is designed for the consumer who desires comfort and quiet operation.



Standard Features

- Combines cooling with heat pump and gas heating for optimal year-long performance
- High-efficiency scroll compressor
- Heavy-duty stainless-steel heat exchanger
- Multi-speed ECM indoor blower motor
- All-Aluminum evaporator coil
- Copper tube / aluminum fin condenser coil
- Compressor sound blanket
- Two-stage gas valve; natural gas with easy conversion to propane with accessory kit
- Power-assisted combustion
- Direct spark ignition system includes a microprocessor-based control for the entire ignition sequence
- All blower operation and all safety circuits complete with self-diagnostics
- High and low-pressure switch protection
- All models comply with California Low NOx emission standards
- This furnace does not comply with the SCAQMD Rule 1111 nor the SJVAPCD Rule 4905 14 ng/J NOx emission limit and therefore is not eligible for installation in California's

South Coast Air Quality Management District (SCAQMD) nor the San Joaquin Valley Air Pollution Control District (SJVAPCD)

- AHRI Certified; ETL Listed

Cabinet Features

- Fully insulated heavy-gauge, zinc-coated steel cabinet with UV-resistant powder-paint finish
- Aluminum foil-facing internal insulation reinforced with fiberglass scrim
- Louvered metal panel condenser coil protection
- Horizontal or downflow application
- Convenient access panels
- One roof curb fits all units
- Bottom, 2" high base rails for easy handling
- All models fit a standard-size pick-up truck
- When properly anchored, meets the 2001 Florida Building Code unit integrity requirements for hurricane-type winds (Anchor bracket kits available.)
- One footprint for all tonnages

CONTROLS AND THERMOSTATS





AMANA® BRAND SMART THERMOSTAT

EQUIPMENT COMPATIBILITY*		
Product Type	Compatible model families*	Compatible Model
AIR CONDITIONERS	AVXC20, ASXV9, ASXC7, ASXS6, ASXW6	ATST-CWE-BL-A
HEAT PUMPS	AVZC20, ASZV9, ASZC7, ASZS6	ATST-CWE-BL-A
GAS FURNACES	AMVM97, ACVM97, AMVC96, ACVC96, AMVC80, ACVC80, AMVS96-U, AMVS80-U	ATST-CWE-BL-A
AIR HANDLERS	AHVE, MBVCXX00	ATST-CWE-BL-A
Coils	CHPE, CAPE	ATST-CWE-BL-A

* not all models or families are compatible in all configurations. See AHRI listing to confirm a specific combination

Features

- Simple, elegant industrial design
- Capacitive touchscreen user interface
- Wi-Fi-enabled smart thermostat with iOS and Android app control
- Voice control by Amazon Alexa and Google Assistant
- Control and comfort functions: Away mode, geo-fencing
- Outdoor environment monitoring: outdoor temperature, outdoor humidity, and weather forecast
- Error and service notifications
- Multi-language support: English, Spanish, French
- Programmable 4-event schedule with adjustable hold function
- Open API compatible for home control systems such as Control4 and Crestron
- Compliant to California Title 24 (OCST listed), FCC Certified, and UL Listed

Additional Features (PRS4110/PRS4210)

- Capacitive touch screen
- Bi-directional communications protocol for controlling HVAC system
- Bubble level (to aid installation)
- 640 × 480 pixels × 24 bit RGB (full color screen)
- Wi-Fi
- Operation Temperature: 32°F to 120°F



* Complete warranty details available from your local dealer/contractor or at www.amana-hac.com. To receive the 10-Year¹ Limited Warranty, online registration must be completed within 60 days of installation. Online registration is not required in California or Quebec. The duration of warranty coverages in Texas differs in some cases.

¹ 10-Year Limited Warranty is available for owner-occupied residences only. For multi-family and/or commercial applications, the warranty period is 5-years.

AT4272/AT4273 / Touchscreen / High-Resolution full color Display / Built-in Wi-Fi

Product Features for All Models

- Built-in Wi-Fi with downloadable remote control apps
- Customizable wallpaper and slide show*
- Built-in nature and holiday wallpaper themes
- Customizable service alerts
- "Simple as you want" operation with easy-to-read display
- TouchScreen assistant for fast and easy programming
- SD memory card slot for easy importing and exporting of thermostat data, including copying data between thermostats*
- At-a-glance screen lets users see temperature and heating/cooling status
- Programmable fan and night-time dimmer
- 7-Day programmable scheduler
- Switchable programmable or non-programmable
- Up to 4 heat & 2 cool stages
- Automatic daylight savings adjustments
- 7-Day energy usage graph
- Passcode security for screen lock and set-point limits
- Multiple languages: English, Spanish, and French
- Gas/electric or heat pump control
- Universal compatibility including dual fuel

AT4273 Features

- Controls humidification & dehumidification

* SD card not included.



* Complete warranty details available from your local dealer or at www.amana-hac.com. The duration of warranty coverages in Texas differs in some cases.

PRS3110/PRS3210 / Non-Programmable Thermostat
PRS4110/PRS4210 / Programmable Thermostat



Non-Programmable*

PRS3110 – 1 Heat / 1 Cool
 PRS3210 – 2 Heat / 1 Cool



Programmable*

PRS4110 – 1 Heat / 1 Cool
 PRS4210 – 2 Heat / 1 Cool

Compatibility

- Single-stage conventional or heat pump systems
- Multi-stage heat pump systems (PRS3210, PRS4210)
- Multi-stage conventional systems (PRS3210, PRS4210)
- 2-wire hydronic zone systems
- Millivolt systems

Features

- Large display with bright blue backlight
- Adjustable temperature limits for multi-family housing
- Hardwire or battery powered
- Permanent memory retains settings
- Low battery indicator
- Front access reset button
- Compressor short cycle protection
- Fahrenheit or celsius display mode
- Adjustable temperature differential
- ESD guard™ electronic circuitry
- Trilingual packaging and instructions

Additional Features (PRS4110/PRS4210)

- 7 day, 5-2 day or non-programmable
- Temporary program override
- Programmable extended hold mode
- Filter check monitor
- Adaptive recovery mode (ARM™)
- ROHS compliant



* Complete warranty details available from your local branch. The duration of warranty coverages in Texas differs in some cases.

PRS6110/PRS6320 / Premier Universal Programmable Thermostat

Compatibility

- Single-stage conventional or heat pump systems
- Multi-stage heat pump systems
- Multi-stage conventional systems (PRS6320)
- 2 or 3 wire hydronic zone systems
- Millivolt systems

Features

- 7 day, 5-2 day or non-programmable
- Large display with bright blue backlight
- Auto or manual changeover
- Residential or commercial modes
- Hardwire or battery powered
- Permanent memory retains settings
- Circulating fan mode
- Programmable fan mode
- Separate user and installer reset buttons
- User selectable service monitors
- Indoor or outdoor remote sensing
- Temporary program override
- Programmable extended hold mode
- Adaptive recovery mode (ARM™)
- Multi-level keypad lockout
- Heat pump balance points
- Trilingual packaging and instructions
- ROHS compliant



Premier Universal Programmable*

PRS6110 – 2 Heat / 1 Cool

PRS6320 – 3 Heat / 2 Cool



* Complete warranty details available from your local branch.
The duration of warranty coverages in Texas differs in some cases.

PRS6420 / Premier Universal Programmable Touchscreen Thermostat

**Premier Universal
Programmable Touchscreen***

PRS6420 – 4 Heat / 2 Cool

Compatibility

- Single-stage conventional or heat pump systems
- Multi-stage heat pump systems
- Multi-stage conventional systems
- 2 wire hydronic zone systems
- Millivolt systems

Features

- 7 day, 5-2 day or non-programmable
- Auto or manual changeover
- Residential or commercial modes
- Hardwire or battery powered
- Permanent memory retains settings
- Circulating and programmable fan modes
- Separate user and installer reset buttons
- User selectable service monitors
- Indoor or outdoor remote sensing
- Multi-level keypad lockout
- Temporary program override
- Programmable extended hold mode
- Adaptive recovery mode (ARM™)
- Humidification and dehumidification control
- Heat pump balance points
- Auxiliary fresh air economizer terminal
- Auxiliary heat fossil fuel option
- Trilingual packaging and instructions
- ROHS compliant



* Complete warranty details available from your local branch.
The duration of warranty coverages in Texas differs in some cases.

PRS7325WF / Universal Smart Wi-Fi Thermostat

Compatibility

- Single-stage conventional or heat pump systems
- Multi-stage heat pump systems
- Multi-stage conventional systems
- No common (C) wire required for Wi-Fi on most systems**

Features

- 7 day, 5-2 day or non-programmable
- Large 3 sq. in. backlit display
- Bright blue backlight
- Auto or manual changeover
- User and installer lock modes
- SmartLimit™ temperature limits
- Auxiliary heat fossil fuel option
- Hardwire or battery powered
- Circulating fan mode
- ROHS compliant

** Wi-Fi works without common (C) wire on most systems; requires common (C) wire on heat pump, heat only or cool only systems



Universal Smart Wi-Fi*

PRS7325WF – Up to 3 Heat / 2 Cool



**Remote Access from
Smartphone, Tablet or PC**



* Complete warranty details available from your local branch.
The duration of warranty coverages in Texas differs in some cases.



Compatible with Amazon Alexa

Amazon Alexa is a trademark of Amazon.com, Inc.



BlueLink Application Help Available:
www.bluelinksmartconnect.com
Requires iOS or Android™ to connect

PRS6390 / Wired Remote Indoor Sensor
PRS6490 / Wired Remote Outdoor Sensor



PRS6390

Product Features: PRS6390

- Contemporary style for any decor
- Sense remotely or average with thermostat
- Sense range of 40° to 99°F

Product Specifications: PRS6390

- Accuracy: +/- 1°F (.5°C)
- Storage Temperature: 14° to 140° (-10 to 60°C)
- Operating Humidity: 5% to 95% Relative Humidity
- Dimensions: 3.0" x 2.5" x .9"
- Unit Weight: .12 Lbs.
- Carton Weight: .70 Lbs.
- Carton Size: 6.6" x 3.5" x 3.25"
- Carton Qty: 6



PRS6490

Product Features: PRS6490

- Mounts outdoors up to 200 feet away
- Enables outdoor control functions
- Sense range of -40° to 120°F

Product Specifications: PRS6490

- Accuracy: +/- 1°F (.5°C)
- Storage Temperature: 14° to 140° (-10 to 60°C)
- Operating Humidity: 5% to 95% Relative Humidity
- Dimensions: 1.25" x .25" w/60" 2-wire cable
- Unit Weight: .10 Lbs.
- Carton Weight: .60 Lbs.
- Carton Size: 6.6" x 3.5" x 3.25"
- Carton Qty: 6

Compatible with thermostat models:

- PRS6110
- PRS6320
- PRS6420



* Complete warranty details available from your local branch.
 The duration of warranty coverages in Texas differs in some cases.



Heating & Air Conditioning
Amana



HVAC Communicating Control

ComfortBridge technology offers off-the-wall smart communicating systems capable of customizing energy-efficient performance, use of any single-stage thermostat, and more.



www.comfortbridge.com



Pure. Clean. Air.

Indoor comfort in your home is about more than just adjusting the temperature on the thermostat. Many homeowners overlook the need for necessary components and systems that can improve the indoor air you breathe.



www.cleancomfort.com

AMANA IS SOCIAL!



Amana brand products average **4.7 out of 5** stars in homeowner satisfaction with thousands of reviews captured on **Amana** brand Heating and Air Conditioning products.

Don't just take our word for it...
See the reviews on
www.amana-hac.com/reviews.



Additional information

Before purchasing this appliance, read important information about its estimated annual energy consumption, yearly operating cost, or energy efficiency rating that is available from your retailer.

www.amana-hac.com